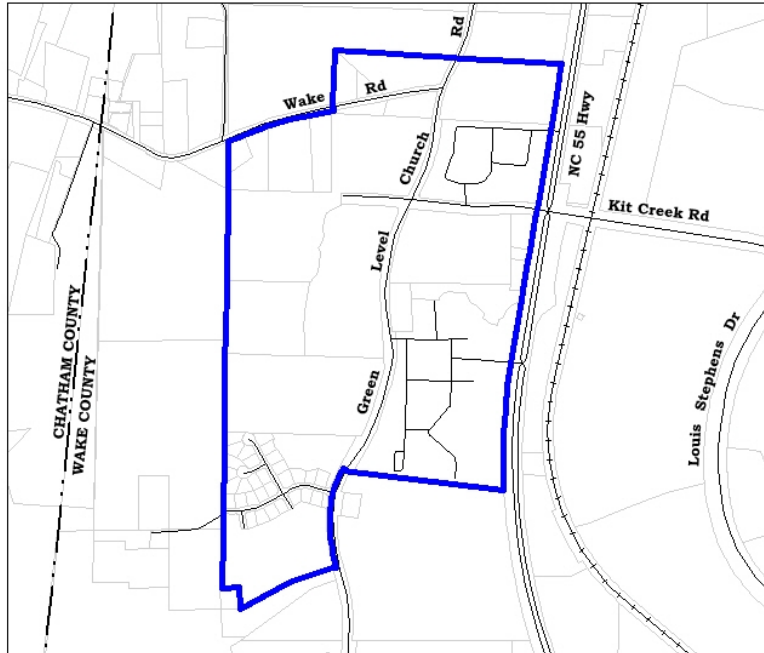


Village at the Park Neighborhood Mixed Use Center



| Existing Non-Residential Floor Area (SF) | | Square Feet |
|--|----------------------------|----------------|
| Commercial/Retail | | 0 |
| Office/Institutional | | 0 |
| Total | | 0 |
| Other (not included above) | | |
| | Schools & Daycares | 104,584 |
| | Assisted Living Facilities | 0 |
| | Places of Worship | 0 |
| | Theatres/Cinemas | 0 |
| Total | | 104,584 |
| Existing Residential Units | | Units |
| Medium Density (MDR) | | 28 |
| High Density (HDR) | | 710 |
| Hotel/Motel Rooms | | 0 |
| Total | | 738 |
| Land Status | | Acres |
| Vacant | | 109.56 |
| Underdeveloped | | 12.97 |
| Developed | | 83.87 |
| Right of Way | | 17.92 |
| Total | | 224.32 |

* Data as of April 1st, 2011. Please see the methodology located on the Mixed Use Center page for further information. Please contact Will Hartye, Planner II, at (919) 380-5991 for any additional information.