

Town of Cary Pump Station Inspection Sheet



Facility Name: I40

Inspection Date: 1/14/2010

ID Number: 009

Pump

Condition: Fair

Type: Submersible Dry Pit

Pump One: 555 gpm

Discharge Diameter: 4"

Pump Two: 671 gpm

Control: Float / FVNR Starter

Firm Capacity 555 gpm

Manufacturer: Fairbanks Morse

Rep: HD SUPPLY WATERWORKS

913-371-5000 5414MV

828-324-9705

Wetwell: 10' by 7'-10"

26'-4" Deep

Vol: 4,800 gal

Odor:

At the Fence: 0.003 ppm

Wetwell: 0.290 ppm

Odor Control: None

Condition: NA

Generator:

Generator: Gregory Poole – Olympia

Condition: Fair

Model D200P4-1 -2003

KVA: 250

KW: 200

Grinder:

Grinder: Muffin Monster

Condition: Good

Sound:

At the Fence: 73 dB Gen off

Wetwell: 62

db Pump off

At the Fence: 90 dB Gen on

Wetwell: 67

db Pump on

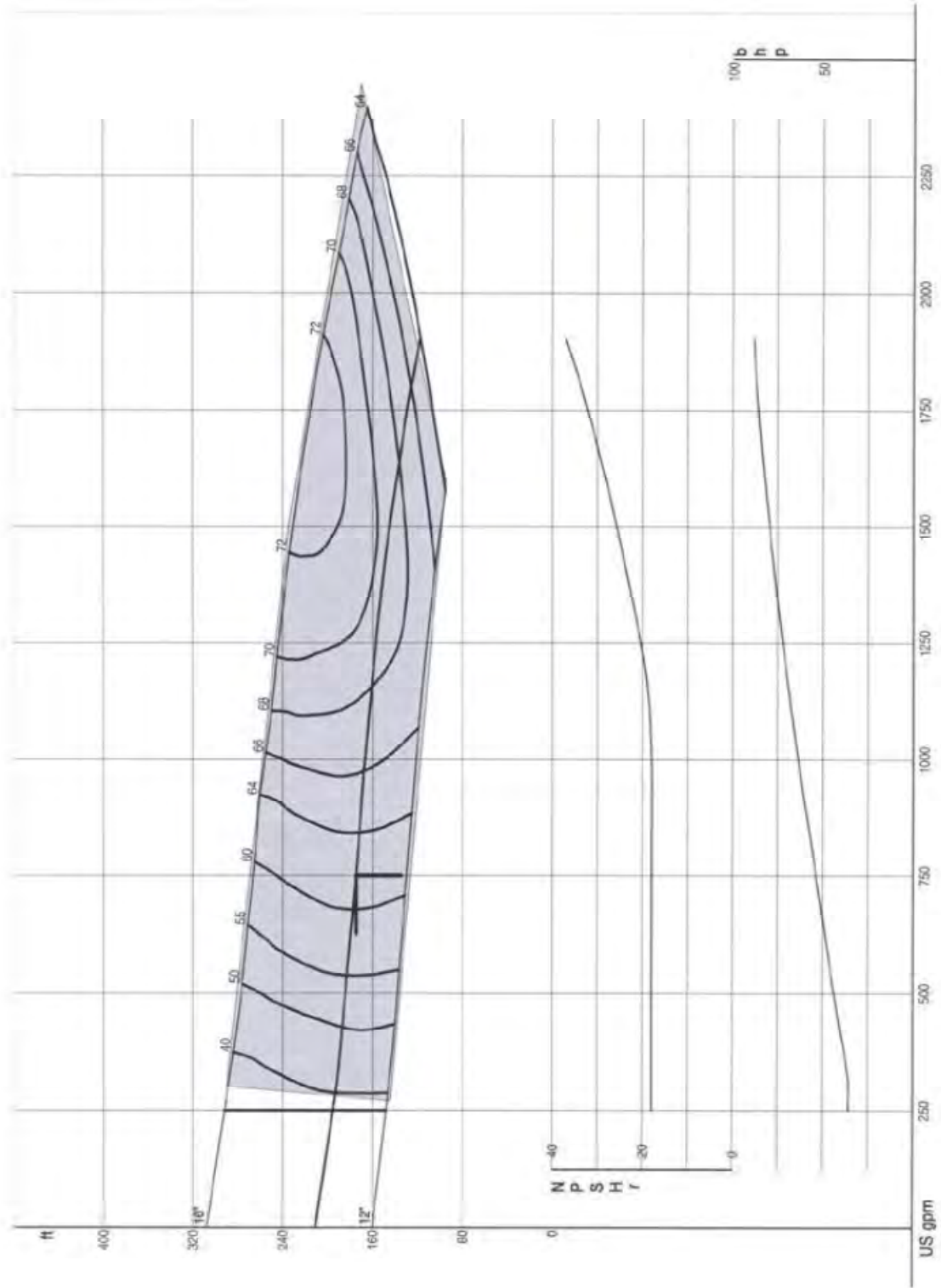
Comments:

- potable water line frozen at backflow preventer
- control panel is old and messy
- surface rust on wetwell ladder
- some paint peeling off in dry pit
- unistrut holding off power panels rusty
- generator slow to start
- wetwell coating is failing

Town of Cary Pump Station Inspection Sheet



SAS/I40 PS Pump Curve



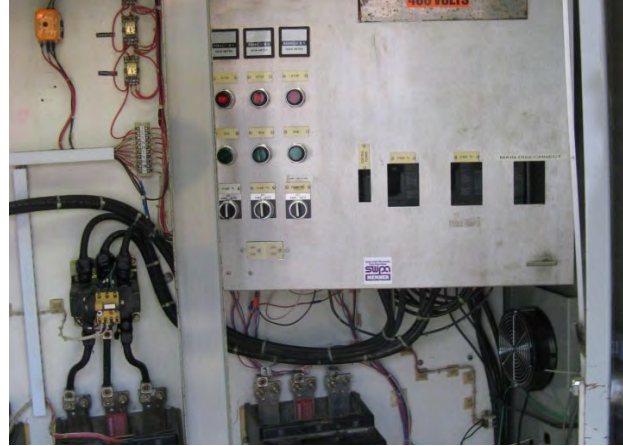
Town of Cary Pump Station Inspection Sheet



SAS/140 Pump Station



Control Panel



Check Valve



Generator



Pumps



Wetwell

