

Town of Cary Pump Station Inspection Sheet



Facility Name: Nelson Road PS

Inspection Date: 9/7/2011

ID Number: 005

Drawdown Date: 2/26/2002

Pump

Condition: Good

Type: Submersible

Pump One: 1,110 gpm

Discharge Diameter: 6"

Pump Two: 1,016 gpm

Control: Float

Firm Capacity: 1,016 gpm

Motor Horsepower: 100

Design Point (flow): 1,000 gpm

Pump RPM: 1780

Design Point (pressure): 200 feet of water

Manufacturer: Fairbanks Morse

Rep: HD Supply (828)324-9705

Model: 5436M&W (913)371-5000

Wetwell: 8' Diameter 12'-11" Deep Vol: 4,800 gal

Generator:

Generator: 3208

Condition: Poor

Caterpillar 188 KW

150 kWA Manual Switchgear

Sound:

At the Fence: 59 dB Gen off

Five Foot from Gen: 104 db Gen on

At the Fence: 86 dB Gen on

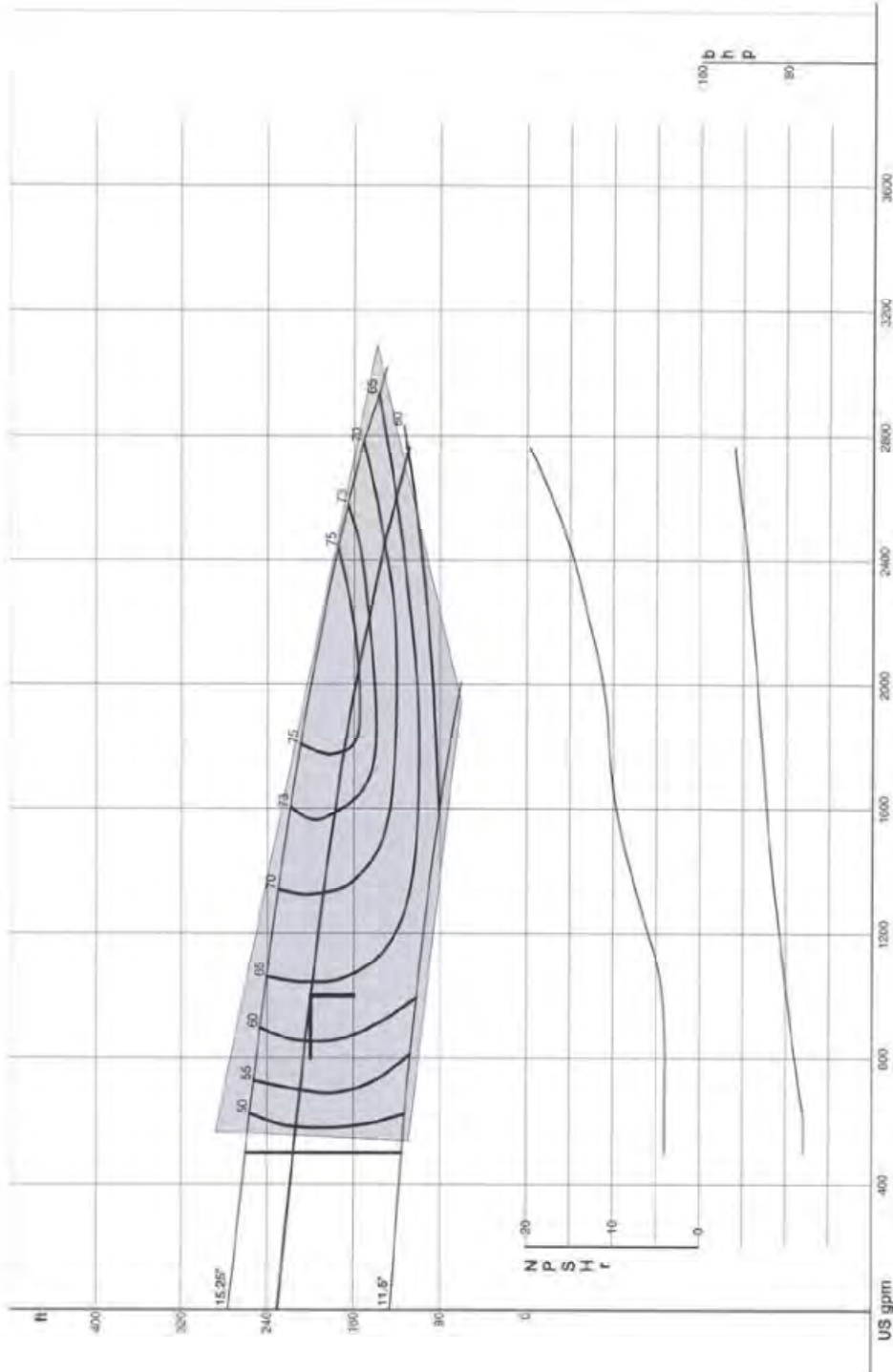
Comments:

- 8' diameter wetwell, coated; coating is in poor condition
- pump guide rails have surface corrosion
- guide rail support brackets are severely corroded
- concrete slab on grade is in good condition; no sealant in joint
- 12'x9' precast valve vault shows signs of ground water
- aluminum hatch on valve vault is in good condition; latch is corroding
- generator from 1972 is near end of life
- fuel tank paint peeling and rusting
- grinder out of service, bar screen by-pass in use
- bar screen/channel master open vault concrete is in fair condition, no ground water leaks
- welded aluminum handrail is oxidized but in good condition
- mostly cosmetic damage to electrical building (mold and rust on outside)

Town of Cary Pump Station Inspection Sheet



Nelson Road PS Pump Curve



Town of Cary Pump Station Inspection Sheet



Nelson Road Pump Station



Control Panel



Control Panel



Generator



Generator



Generator



Town of Cary Pump Station Inspection Sheet



Nelson Road Pump Station



Control Panel



Electrical Building



Bar Screen



Wetwell



Wetwell

