

Town of Cary Pump Station Inspection Sheet



Facility Name: Jones Franklin

Inspection Date: 1/27/2010

ID Number: 011

Pump

Type: Submersible

Discharge Diameter: 6"

Control: Float / FVNR Starter

Manufacturer: Fairbanks Morse

913-371-5000 5434MV

Wetwell: 10' Diameter 9'-6" Deep

Condition:

Pump One: 791 gpm

Pump Two: 732 gpm

Firm Capacity 732 gpm

Rep: HD SUPPLY WATERWORKS

828-324-9705

Vol: 5,600 gal

Odor:

At the Fence: 0.003 ppm

Wetwell: 0.330 ppm

Odor Control: Carbon Canister

Condition: Fair

Generator:

Generator: Gregory Poole – Olympia

Condition: Good

Model D100P1

KVA: 125 KW: 100

Grinder:

Grinder: Muffin Monster

Condition: Fair

Sound:

At the Fence: 73 dB Gen off

Wetwell: 71 db Pump off

At the Fence: 85 dB Gen on

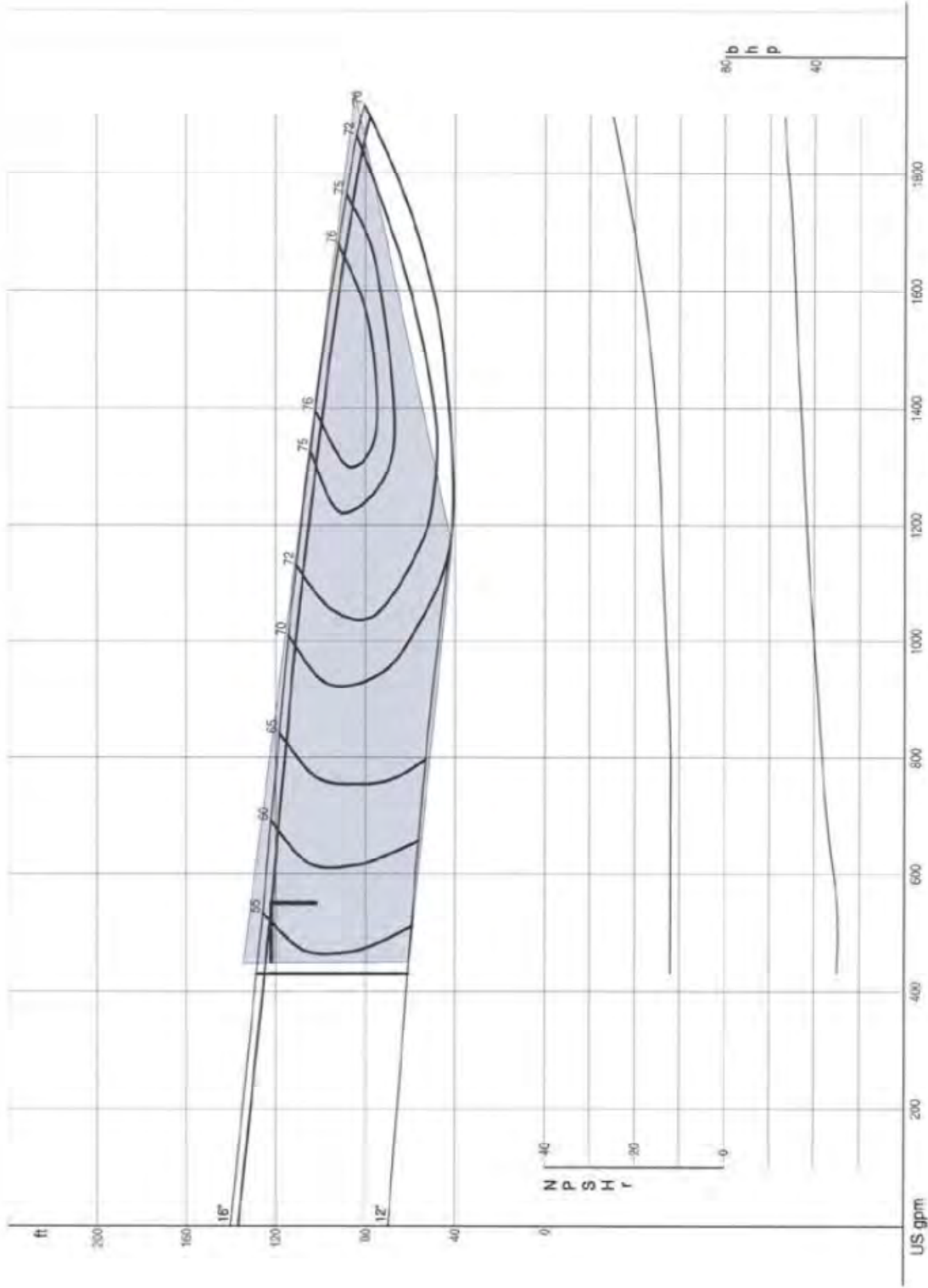
Wetwell: 75 db Pump on

Comments:

- wetwell coating is coming off mostly on the lower sections
- valve vault is wet and muddy
- pump guides in good condition. steel guide supports are in poor condition.
- valve vault has bare CMU walls. Wall need coating
- carbon canister is in fair condition
- pipes in the valve vault are rusty

Town of Cary Pump Station Inspection Sheet

Jones Franklin PS Pump Curve



Town of Cary Pump Station Inspection Sheet



Jones Franklin Pump Station



Control Panel



Carbon Canister



Generator



Wetwell



Wetwell



Town of Cary Pump Station Inspection Sheet



Wetwell



Wetwell



Valve Vault



Valve Vault



Jones Franklin Pump Station



Grinder Hydraulic Unit

