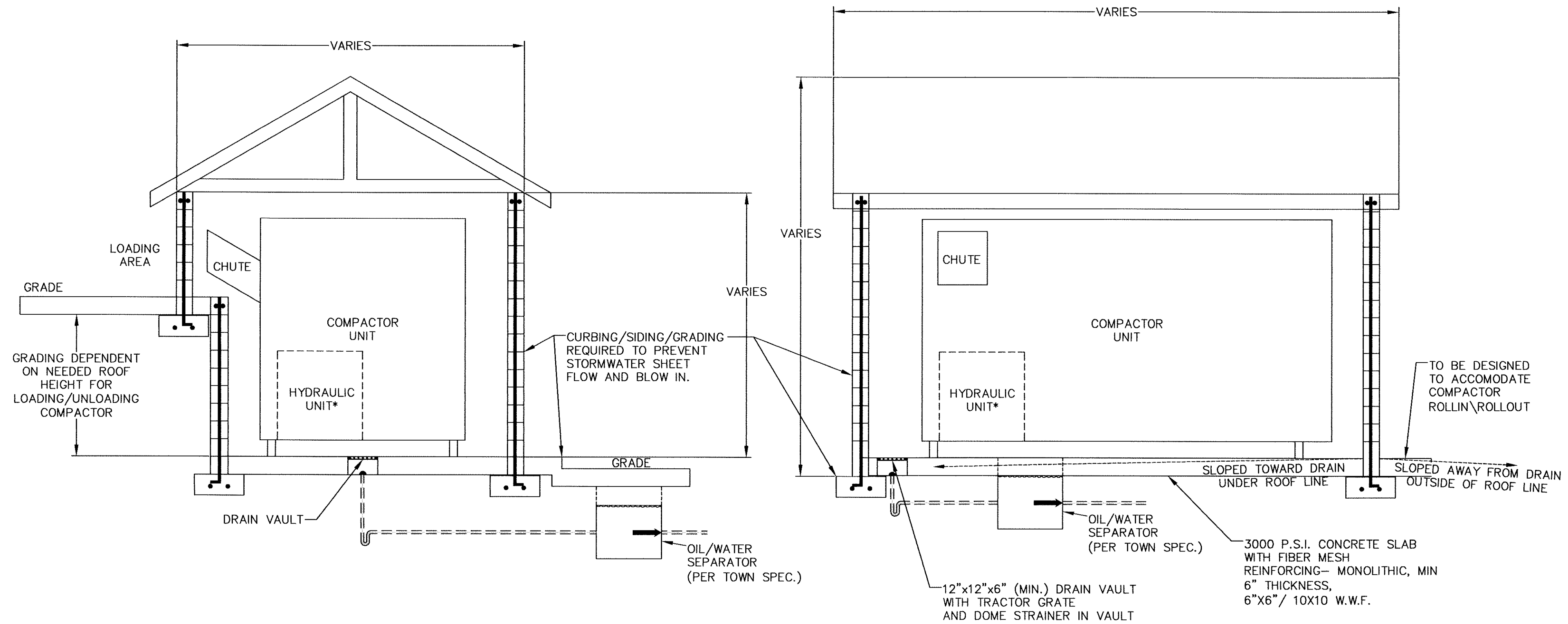


# ELEVATION



**NOTE:**

\* THE HYDRAULIC COMPONENTS, EITHER A SELF-CONTAINED OR STAND ALONE UNIT, ARE TO BE MOUNTED ON THE PAD. IN ADDITION TO THE COMPACTOR SHELL/BODY.

OIL/WATER SEPARATOR SHALL BE H20 BRIDGE LOADED IF SUBJECT TO VEHICULAR TRAFFIC.

COVERED COMPACTOR ENCLOSURE DEPICTION

## COMPACTORS QUALIFYING FOR COVERS

DETAIL No.

RSQC.00

SHEET 1 OF 1

