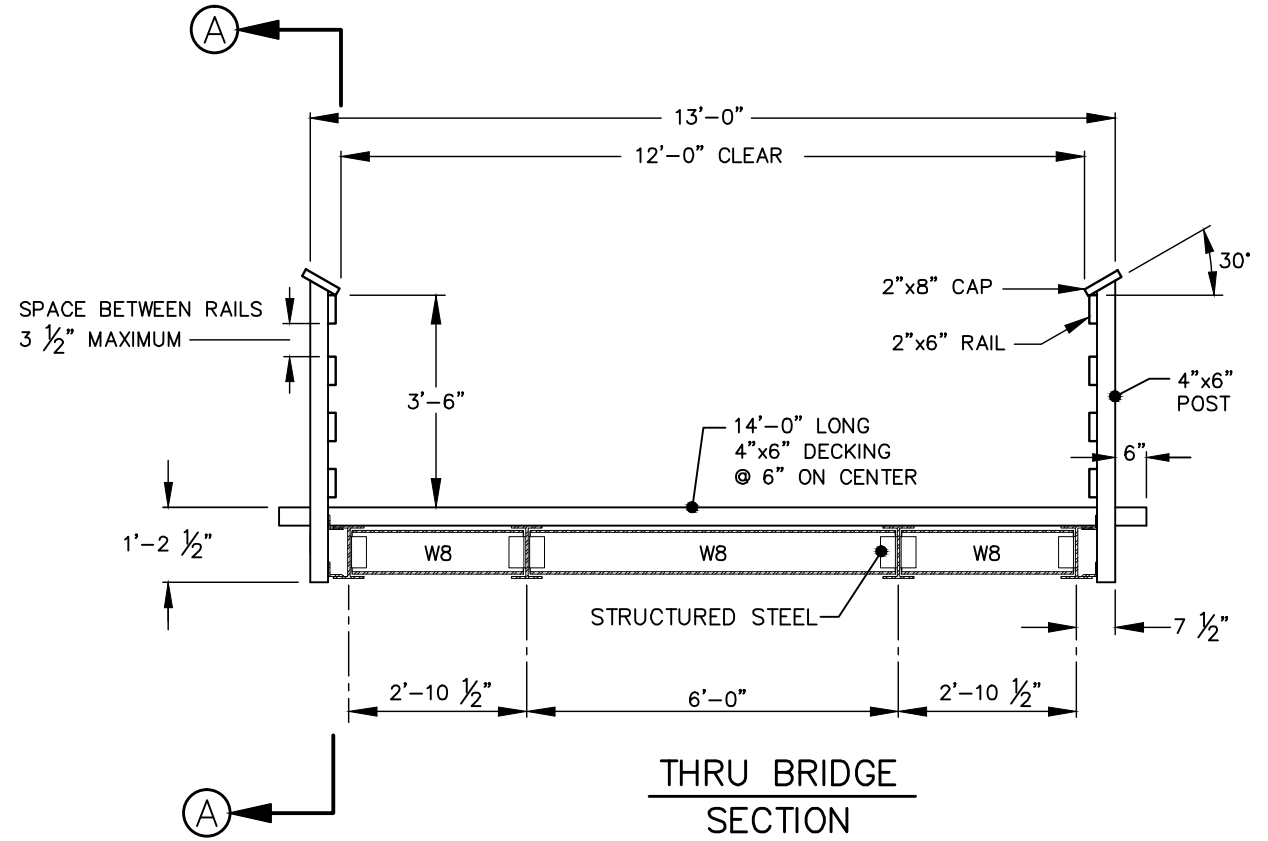


**BRIDGE POST/RAIL
SECTION A-A**



**THRU BRIDGE
SECTION**

BRIDGE SPECIFICATIONS:

A) DESIGN LOADS:

- I. THE BRIDGE SHALL BE DESIGNED FOR AN EVENLY DISTRIBUTED LOAD OF 85 POUNDS PER SQUARE FOOT AS REQUIRED BY AASHTO STANDARD SPECIFICATIONS FOR HIGHWAY BRIDGES, 16TH EDITION, AND A CONCENTRATED LOAD OF 20,000 POUNDS AT MID-SPAN. THE DESIGN OF THE LAMINATED LUMBER BRIDGE COMPONENTS SHALL BE IN ACCORDANCE WITH THE "AMERICAN INSTITUTE OF TIMBER CONSTRUCTION", "AITC 117-2001", OR LATEST EDITION.
- II. THE TOTAL BRIDGE DEAD LOAD APPLIED TO THE END BENT SHALL NOT EXCEED 37,000 POUNDS.

B) REFER TO ADDITIONAL WRITTEN SPECIFICATIONS.



EFFECTIVE: 12/10/09

STEEL BEAM AND WOOD BRIDGE (OPTION 'B')

DETAIL No.
09000.20
SHEET 1 OF 1