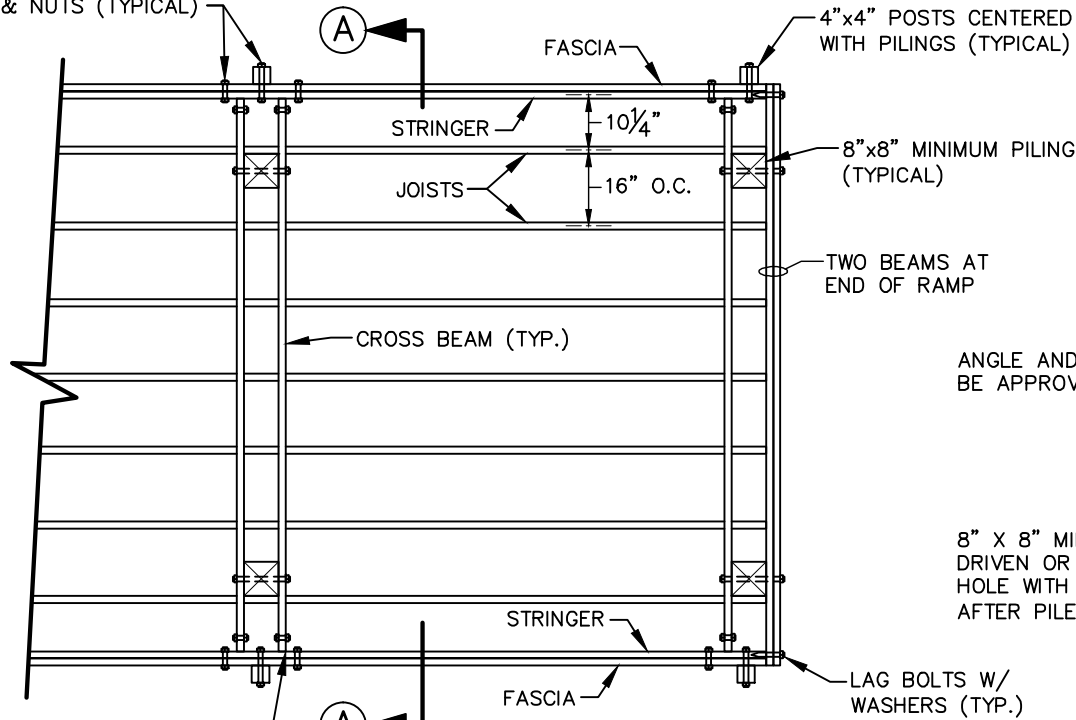
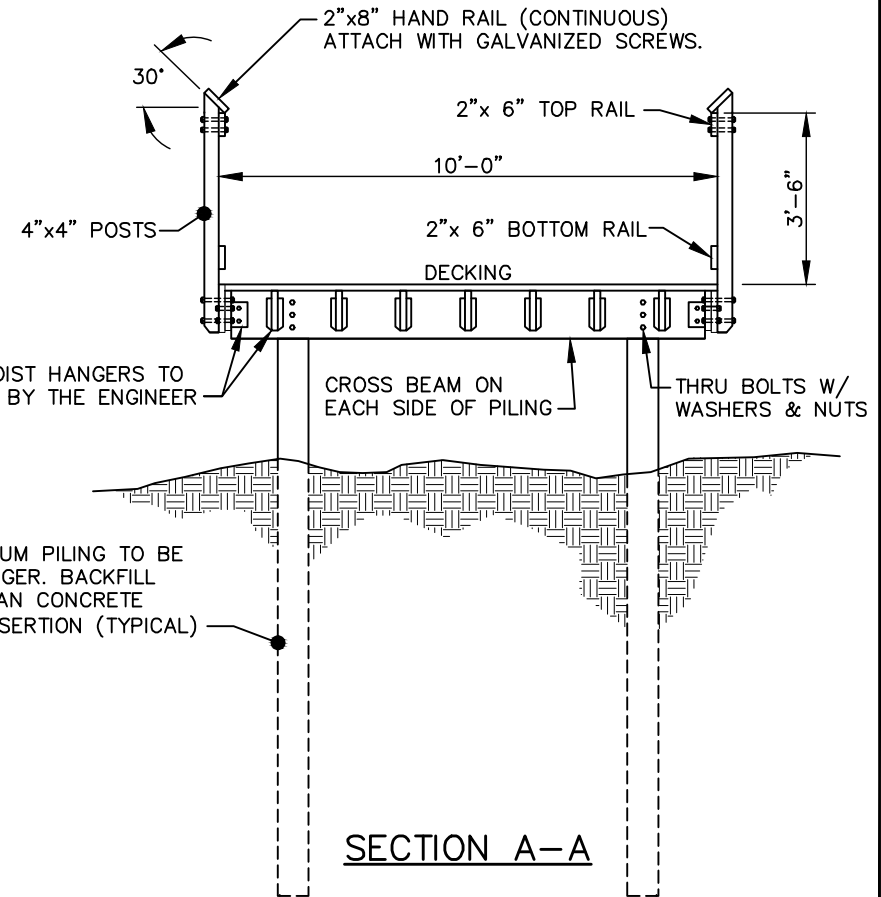


THRU BOLTS W/ WASHERS & NUTS (TYPICAL)



PLAN VIEW
(FOR ELEVATION VIEW
SEE DETAIL 09000.14)



SECTION A-A

NOTES:

- 1) MINIMUM PILE PENETRATION FOR PIERS SHALL BE TEN FEET (OR APPROVED DEPTH BY GEOTECHNICAL ENGINEER).
- 2) SMALL MEMBERS SHALL HAVE PRE-DRILLED HOLES TO PREVENT SPLITTING DURING CONSTRUCTION. DECKING TO BE ATTACHED TO JOISTS USING GALVANIZED SCREWS & HARDWARE (ALL WOODEN MEMBERS SHALL BE BOLTED OR SCREWED TOGETHER. NO NAIL CONNECTIONS).
- 3) ALL BOLTS, NUTS, WASHERS, ETC. SHALL BE HOT DIPPED GALVANIZED AFTER FABRICATION IN ACCORDANCE WITH ASTM A153.
- 4) TIMBER BOARDWALK IS DESIGNED IN ACCORDANCE WITH AASHTO STANDARD SPECIFICATIONS FOR HIGHWAY BRIDGES (17 EDITION - 2002). DESIGN LIVE LOAD IS SMALL VEHICLE OF 5000 POUNDS, 2500 POUNDS PER AXLE WITH A MINIMUM 96" WHEEL BASE.
- 5) SITE SOIL PROPERTIES ARE ASSUMED TO SUPPORT FOUNDATION LOADS. CONTRACTOR SHALL PROVIDE GEOTECHNICAL REPORT TO THE ENGINEER INDICATING THE SITE SOIL PROPERTIES THAT CAN SUPPORT FOUNDATION LOADS PRIOR TO BEGINNING CONSTRUCTION.
- 6) JOIST HANGER SHALL BE CAPABLE OF SUPPORTING A MINIMUM SAFE WORKING LOAD OF 3150 POUNDS AND SHALL BE GALVANIZED.
- 7) STRUCTURAL ENGINEER SHALL SIZE ALL LUMBER AND SEAL DETAILS & PLANS.



EFFECTIVE: 12/10/09

STANDARD BOARDWALK (PLAN & SECTION VIEW)

DETAIL No.

09000.15

SHEET 1 OF 1