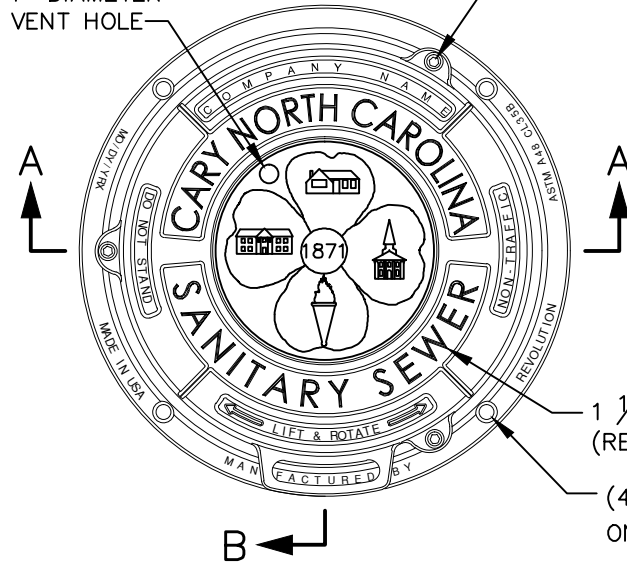


1" DIAMETER VENT HOLE



(3) HEX HEAD  $\frac{3}{8}$ "-16  
ZINC PLATED BOLT WITH ZINC WASHER  
& ZINC COATED STAINLESS STEEL NUT

**SPECIFICATIONS:**

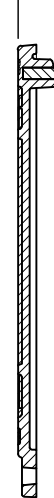
1. GRAY IRON.
2. COMPLIES WITH ASTM A48 CL35B.
3. ALL LETTERING SHALL BE CLEAN, CRISP, AND CLEARLY LEGIBLE.
4. DOMESTICALLY MADE AND MANUFACTURED IN THE USA.

1  $\frac{1}{2}$ " RAISED LETTERING  
(RECESSED FLUSH)

(4) 1" DIA. HANDLING HOLES  
ON A  $29 \frac{3}{4}$ " DIA. B.C.

COVER TOP VIEW

$5 \frac{5}{16}$ "



CAST-IN  
STAINLESS  
STEEL ROD

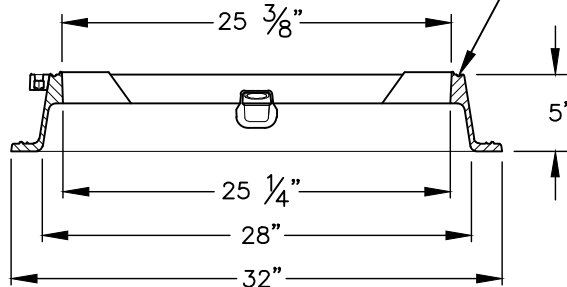
$11 \frac{5}{8}$ "



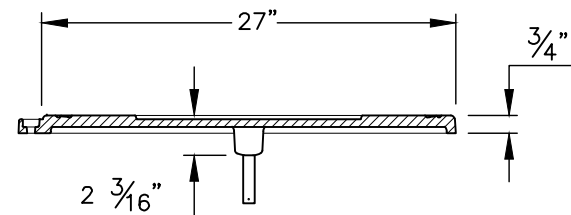
COVER SECTION  
B-B

FRAME SECTION  
B-B

OPTIONAL CAST-IN GROOVE FOR  
 $\frac{1}{4}$ " DIAMETER NEOPRENE GASKET



FRAME SECTION  
A-A



COVER SECTION  
A-A



**STANDARD MANHOLE RING AND COVER (TYPE 2B FOR OUTFALLS  
OR UNPAVED AREAS - NON-WATERTIGHT APPLICATIONS)**

DETAIL No.

07000.03

SHEET 3 OF 4

EFFECTIVE: 12/10/09