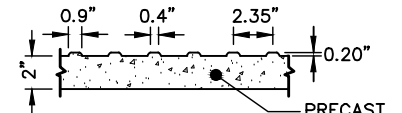
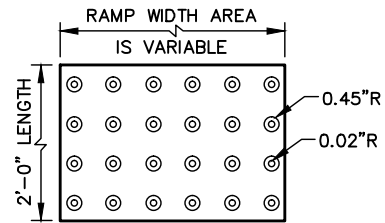


| W | A | W+A+9" | X | B |
|----|------|--------|------|--------|
| 5' | 0.0' | 5.8' | 5.8' | 5.0'* |
| 6' | 0.0' | 6.8' | 6.8' | 6.0'** |
| 7' | 0.0' | 7.8' | 7.3' | 6.5'** |
| 8' | 0.0' | 8.8' | 7.3' | 6.5'** |
| 5' | 2.0' | 7.8' | 7.8' | 5.0' |
| 5' | 2.5' | 8.3' | 8.1' | 4.8' |
| 5' | 3.0' | 8.8' | 8.3' | 4.4' |
| 5' | 3.5' | 9.3' | 8.4' | 4.1' |
| 5' | 4.0' | 9.8' | 8.6' | 3.8' |
| 5' | 4.5' | 10.3' | 8.7' | 3.4' |
| 5' | 5.0' | 10.8' | 8.9' | 3.1' |

B = X - (A + 9")
 B = DISTANCE FROM FRONT EDGE OF SIDEWALK TO BACK POINT OF 12:1 (8.33%) SLOPE.

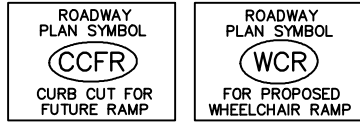
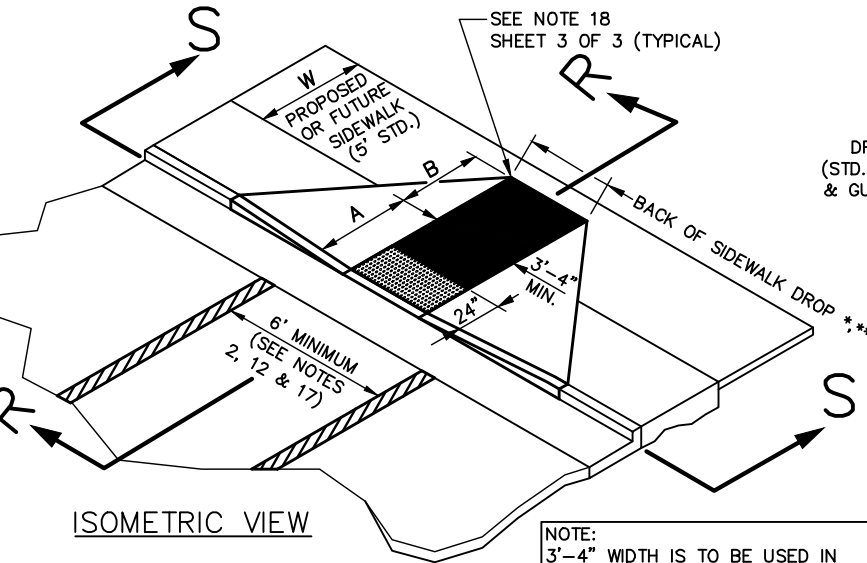
* BACK OF SIDEWALK DROP REQUIRED FOR ALL SIDEWALK SLOPES.

** BACK OF SIDEWALK DROP REQUIRED FOR SIDEWALK SLOPE 0.04.

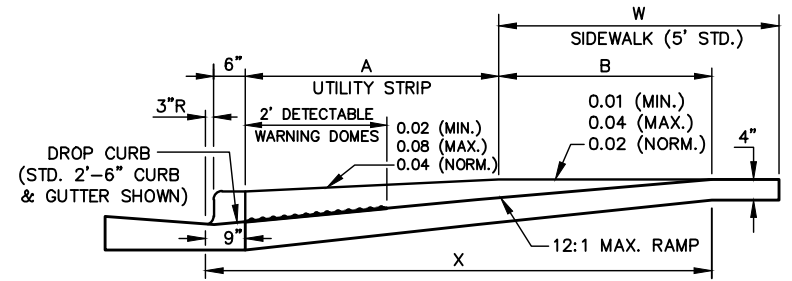


DETECTABLE WARNING DOMES

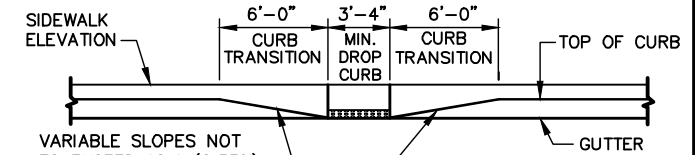
ALTERNATE MATERIAL MAY BE SUBSTITUTED, PROVIDED THE PRODUCT IS ON THE TOWN'S APPROVED MANUFACTURER LIST AND THE MANUFACTURER'S PRODUCT AND INSTALLATION SPECIFICATIONS ARE FOLLOWED.



NOTE:
 3'-4" WIDTH IS TO BE USED IN PUBLIC RIGHT-OF-WAY; ON PRIVATE PROPERTY, 4'-0" IS REQUIRED

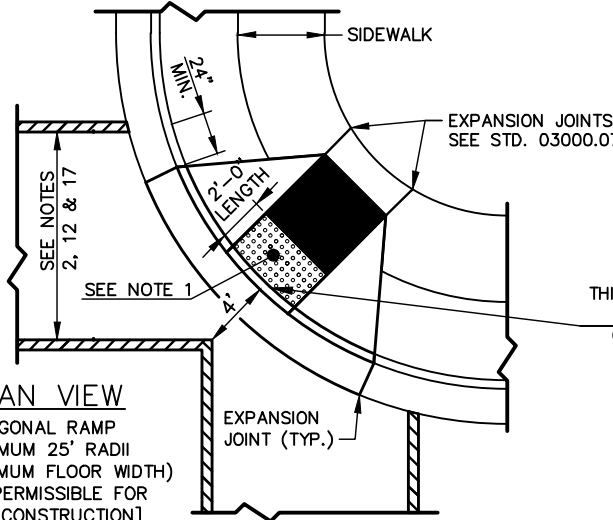


SECTION R-R

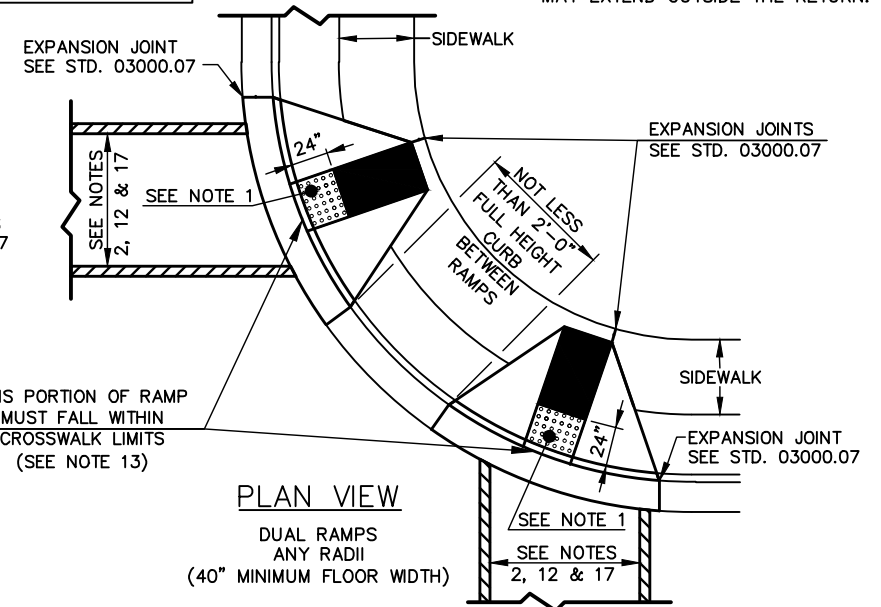


SECTION S-S

NOTE: A PORTION OF ONE OR BOTH RAMPS MAY EXTEND OUTSIDE THE RETURN.



PLAN VIEW
 DIAGONAL RAMP
 MAXIMUM 25' RADII
 (60" MINIMUM FLOOR WIDTH)
 [NOT PERMISSIBLE FOR NEW CONSTRUCTION]

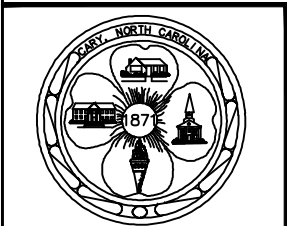


PLAN VIEW
 DUAL RAMPS
 ANY RADII
 (40" MINIMUM FLOOR WIDTH)

STANDARD WHEELCHAIR RAMP

DETAIL No.

03000.14
 SHEET 1 OF 3



EFFECTIVE: 12/10/09