

STANDARD TYPE 2A WATERTIGHT  
MANHOLE RING & COVER

STANDARD PLUG VALVE BOX  
(SEE SPACER DETAIL, THIS  
SHEET)

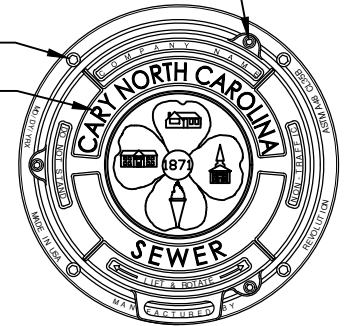
(3) HEX HEAD  $\frac{3}{8}$ "-16 ZINC PLATED BOLT WITH ZINC  
WASHER & ZINC COATED STAINLESS STEEL NUT

(4)  $\frac{3}{8}$ "x  $4\frac{1}{2}$ " ANCHOR BOLTS

$1\frac{1}{2}$ " RAISED LETTERING (RECESSED FLUSH)

**RING & COVER SPECIFICATIONS:**

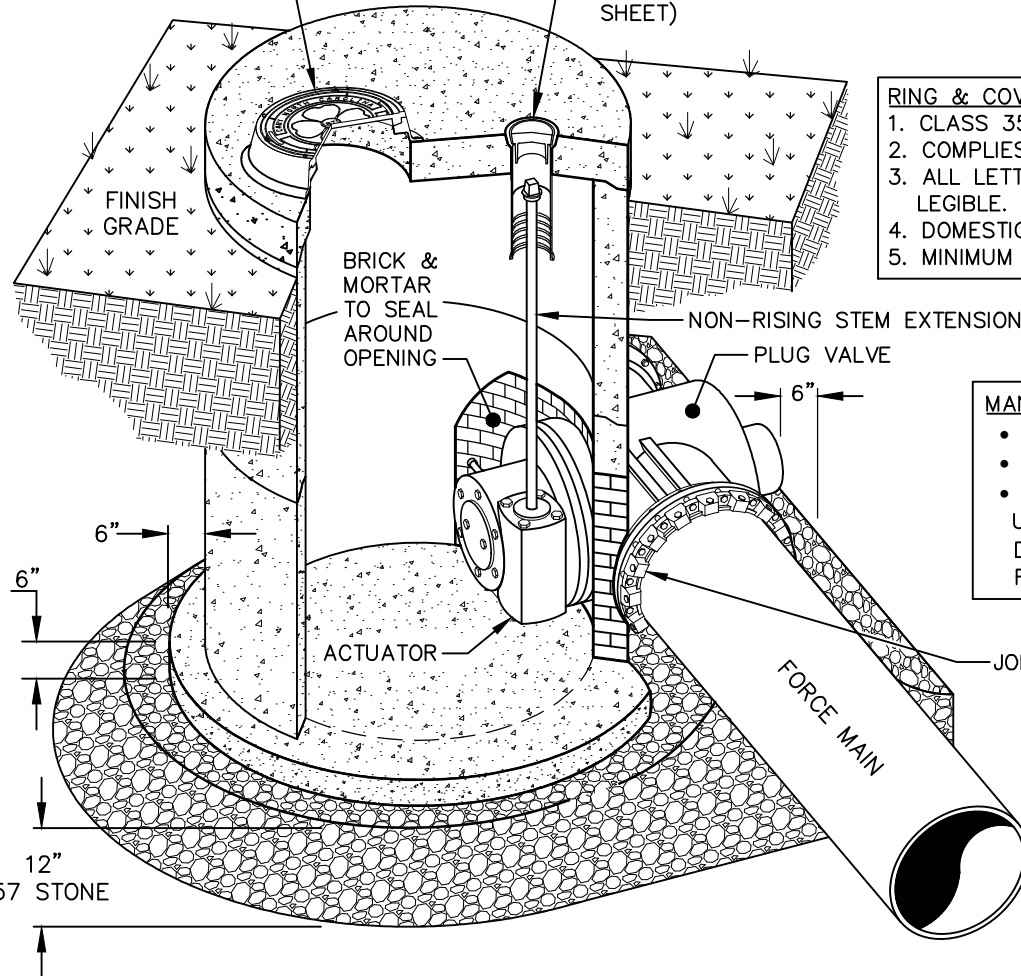
1. CLASS 35 GREY IRON.
2. COMPLIES WITH ASTM A48 CL35B.
3. ALL LETTERING SHALL BE CLEAN, CRISP, AND CLEARLY LEGIBLE.
4. DOMESTICALLY MADE AND MANUFACTURED IN THE USA.
5. MINIMUM WEIGHTS: RING = 95, COVER = 60.



**RING & COVER  
TOP VIEW**

**MANHOLE SIZES:**

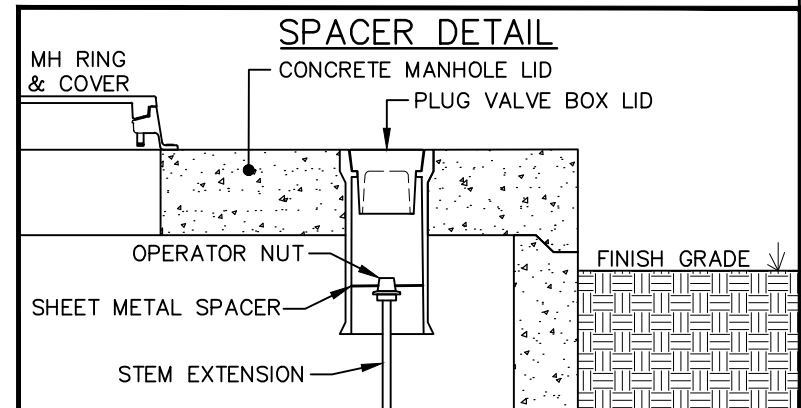
- 4' UP TO 18" FORCE MAIN AND 5' DEPTH.
  - 5' UP TO 24" FORCE MAIN AND 6' DEPTH.
  - 6' UP TO 36" FORCE MAIN AND 10' DEPTH.
- UP SIZE IF BOTH CRITERIA ARE NOT MET.  
DEPTH MEASURED FROM TOP OF PIPE TO  
FINISHED GRADE.



JOINT RESTRAINT SHALL BE POLY WRAPPED

**NOTE:**

1. PROVIDE PIPE SUPPORT IF MORE THAN 50% OF THE VALVE IS IN THE MANHOLE.

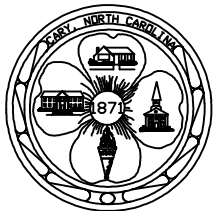


**STANDARD PLUG VALVE INSTALLATION GREATER THAN 12"  
OUTSIDE OF RIGHT-OF-WAY**

DETAIL No.

07200.06

SHEET 1 OF 3



EFFECTIVE: 01/05/17