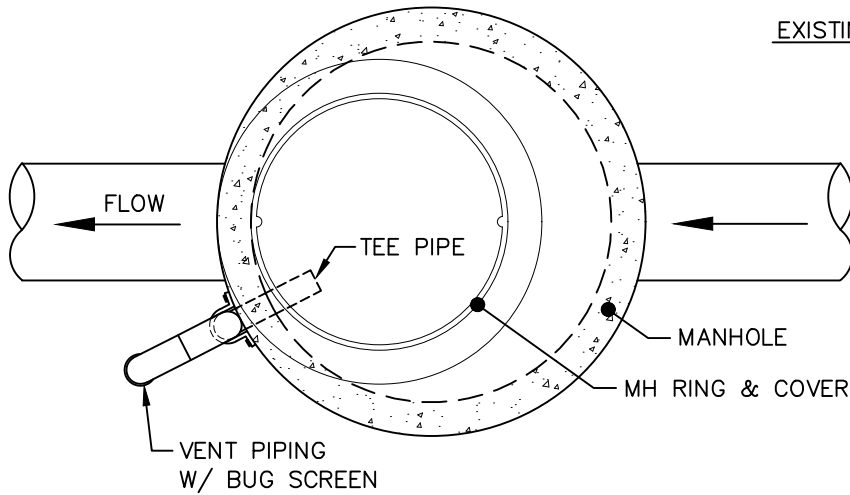


VENT DETAIL

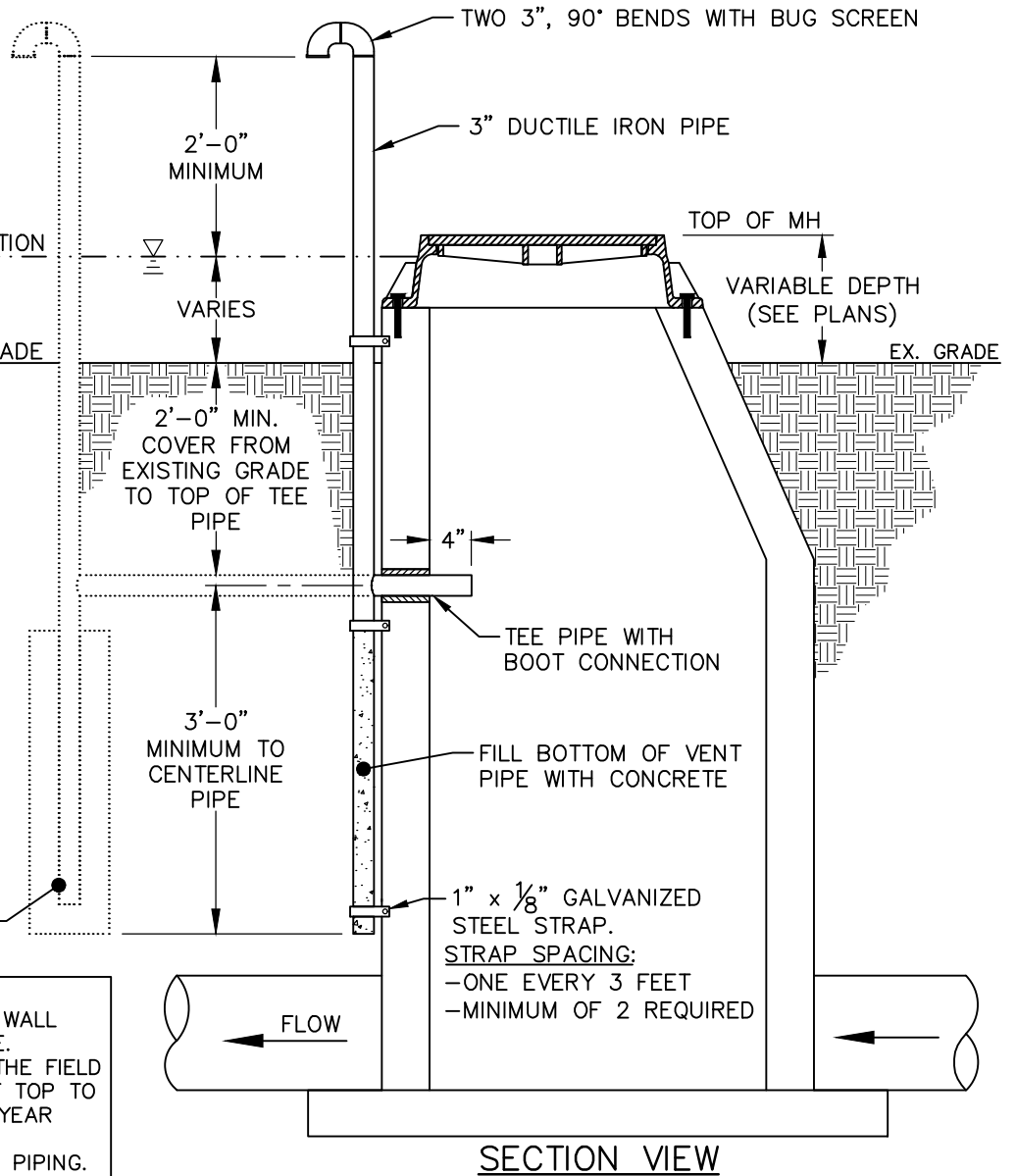


PLAN VIEW

VENT PIPING THAT CANNOT BE STRAPPED TO THE MANHOLE SHALL BE MOUNTED IN AN 10 INCH DIAMETER CONCRETE BASE

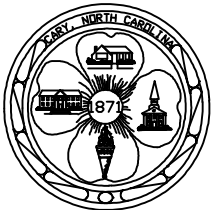
NOTES:

1. VENT PIPE OPENING IN PRECAST CONCRETE MANHOLE WALL SHALL BE CORED WITH A CONCRETE CORING MACHINE.
2. LOCATION OF VENT PIPE SHALL BE AS DIRECTED BY THE FIELD TECHNICIAN WITH WATERTIGHT RING AND COVER VENT TOP TO BE ELEVATED AT LEAST 24 INCHES ABOVE THE 100 YEAR FLOOD PLAIN ELEVATION.
3. 4 INCH PIPING MAY BE SUBSTITUTED FOR THE 3 INCH PIPING.



SECTION VIEW

STANDARD MANHOLE VENT



EFFECTIVE: 01/05/17

DETAIL No.

07000.04

SHEET 1 OF 2