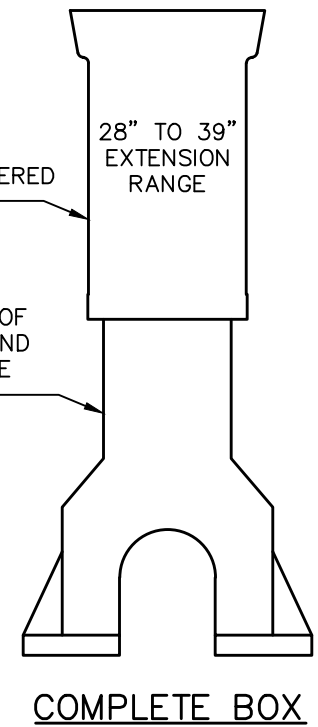


BOX SHALL BE CENTERED OVER CURB STOP

ALL PARTS SHALL BE OF THE SAME MATERIAL AND SUPPLIED BY THE SAME MANUFACTURER



| WEIGHT | |
|--------------|-----------|
| BOTTOM | 29 |
| TOP | 16 |
| LID | 25 |
| TOTAL | 70 |

- NOTES:**
- CURB STOP BOXES SHALL ONLY BE USED AS SPECIFIED ON DETAIL DRAWINGS 06000.04 and 06000.20.
 - MOUSE HOLES SHALL BE COVERED WITH FILTER FABRIC PRIOR TO BACKFILLING.
 - ENTIRE VALVE BOX ASSEMBLY & COVER SHALL BE CAST FROM CLASS 35 GRAY IRON.
 - ASSEMBLY SHALL BE DOMESTICALLY MADE AND MANUFACTURED IN THE U.S.A.



STANDARD WATER CURB STOP BOX

DETAIL No.
06000.08
SHEET 3 OF 3