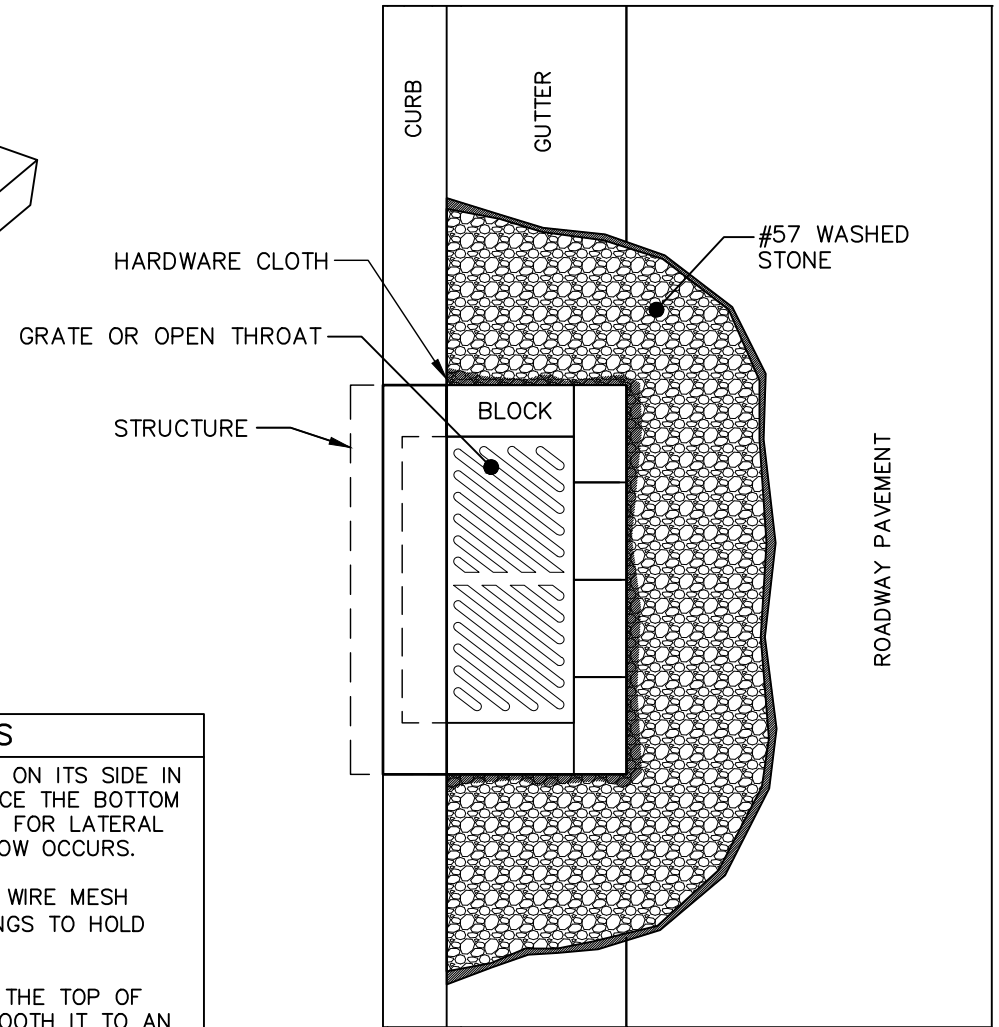


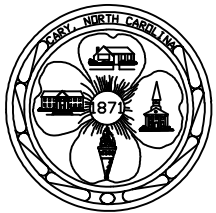
PERSPECTIVE VIEW



PLAN VIEW

CONSTRUCTION SPECIFICATIONS

1. LAY ONE BLOCK ON EACH SIDE OF THE STRUCTURE ON ITS SIDE IN THE BOTTOM ROW TO ALLOW POOL DRAINAGE. PLACE THE BOTTOM ROW OF BLOCKS AGAINST THE EDGE OF THE CURB FOR LATERAL SUPPORT AND TO AVOID WASHOUTS WHEN OVERFLOW OCCURS.
2. CAREFULLY FIT HARDWARE CLOTH OR COMPARABLE WIRE MESH WITH 1/2 INCH OPENINGS OVER ALL BLOCK OPENINGS TO HOLD GRAVEL IN PLACE.
3. USE #57 WASHED STONE PLACED 2 INCHES BELOW THE TOP OF THE BLOCK ON A 2:1 SLOPE OR FLATTER AND SMOOTH IT TO AN EVEN GRADE.
4. APPROVED EQUIVALENTS ACCEPTED.



EFFECTIVE: 01/05/17

STANDARD BLOCK & GRAVEL PROTECTION

DETAIL No.

04000.13

SHEET 1 OF 1