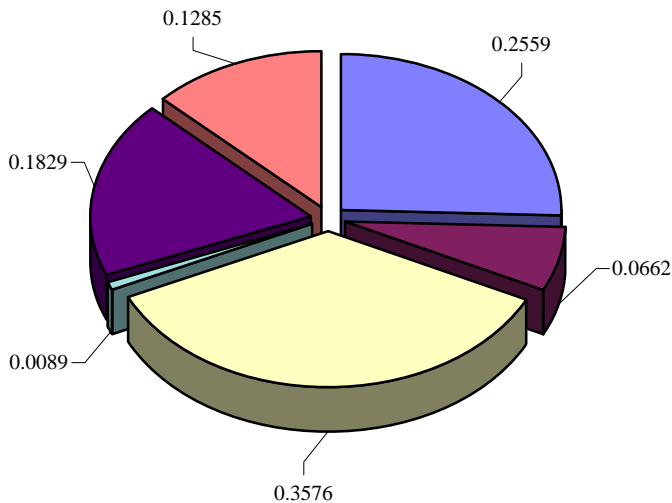


**TOWN OF CARY
GOVERNMENTAL FUNCTIONS EXPRESSED
AS CENTS OF A TAX DOLLAR**

Function	Cents of Tax Dollar
General Government	0.2559
Parks, Recreation and Cultural Resources	0.0662
Public Safety	0.3576
Solid Waste/Recycling	0.0089
Public Works	0.1829
Debt	0.1285
Total Cents	1.0000

General Fund



Did you know that for every tax dollar paid...?

25 cents go to administrative and internal functions such as human resources, purchasing, technology services, engineering, planning, and inspections.

7 cents help fund parks, recreation, cultural, and athletic programs.

36 cents provide fire and police protection.

1 cents help provide solid waste and recycling services.

18 cents are used for public works activities.

13 cents help retire debt for streets, parks, government facilities, and other miscellaneous costs/ functions.

NOTE: These numbers show cents of Cary's tax revenue dollar after factoring out revenue attributable to each function. (with the exception of Debt Service which is fully funded by the tax rate for this calculation)