



Illegal Disposal of Trucked Waste into the Town of Cary Sanitary Sewer

*A felony could be occurring right under
your feet!*

**Town of Cary
Public Works and Utilities Department
Pretreatment Division**

Disclaimer

- *All information contained in this presentation is for training purposes of Town of Cary personnel.*
- *No copying or distribution of this presentation or information contained in this presentation shall occur without prior approval from the Town of Cary.*

Discharge Prohibitions:

Federal-EPA: 40 CFR Part 403.5(b)

- *Trucked or hauled pollutants, except at Town-designated points (criminal)*

Federal-US Code: Title 33 Chapter 1319(c)(2)(a)

- *Willful violation of approved pretreatment program (criminal)*

State -15A NCAC 2H.0909: Pretreatment rules

- *Trucked or hauled pollutants, except at Town-designated points (civil)*
- NCG.S. § 14-399(a) littering (criminal)
- § 14-399(e) littering > 500 lbs (criminal)

Local – Sewer Use Ordinance: Section 19-91 (civil)

- 19-91(b)(2) solids, viscous materials
- 19-91(b)(8) – trucked or hauled wastes
- 19-91(b)(16) – fats, oils, greases at problem levels

Class I Felony

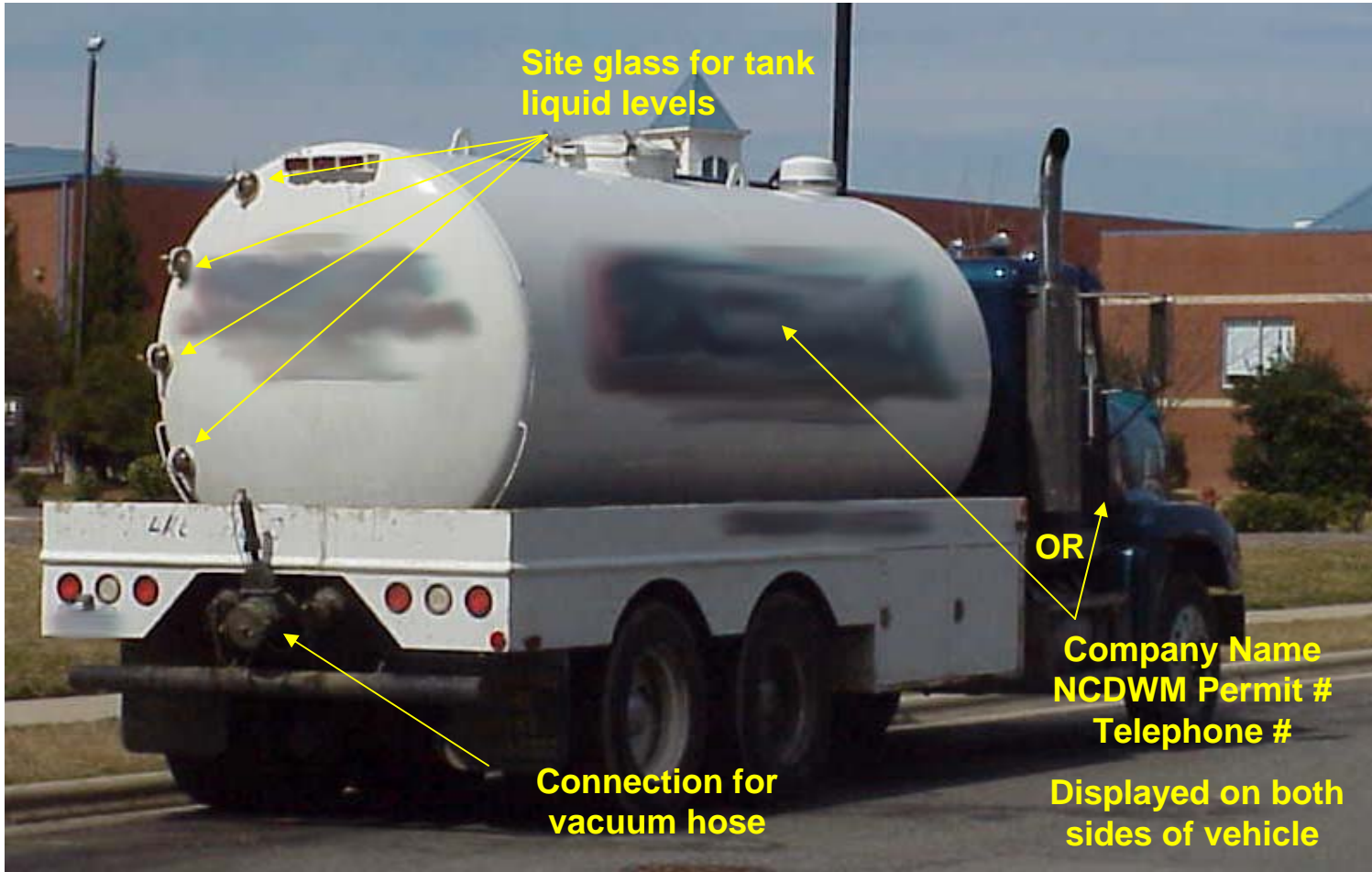
NC General Statute § 14-399(e) – Littering

Any person who violates subsection (a) of this section in an amount exceeding 500 pound or **in any quantity for commercial purposes**, or who discards litter that is a hazardous waste as defined in GS 130A-290 is guilty of a Class I felony

Facilities where a vacuum tanker truck may perform a service

- **Food Service Establishments**
- **Automotive Facilities**
- **Industrial / Commercial Facilities**
- **Septic Tanks**

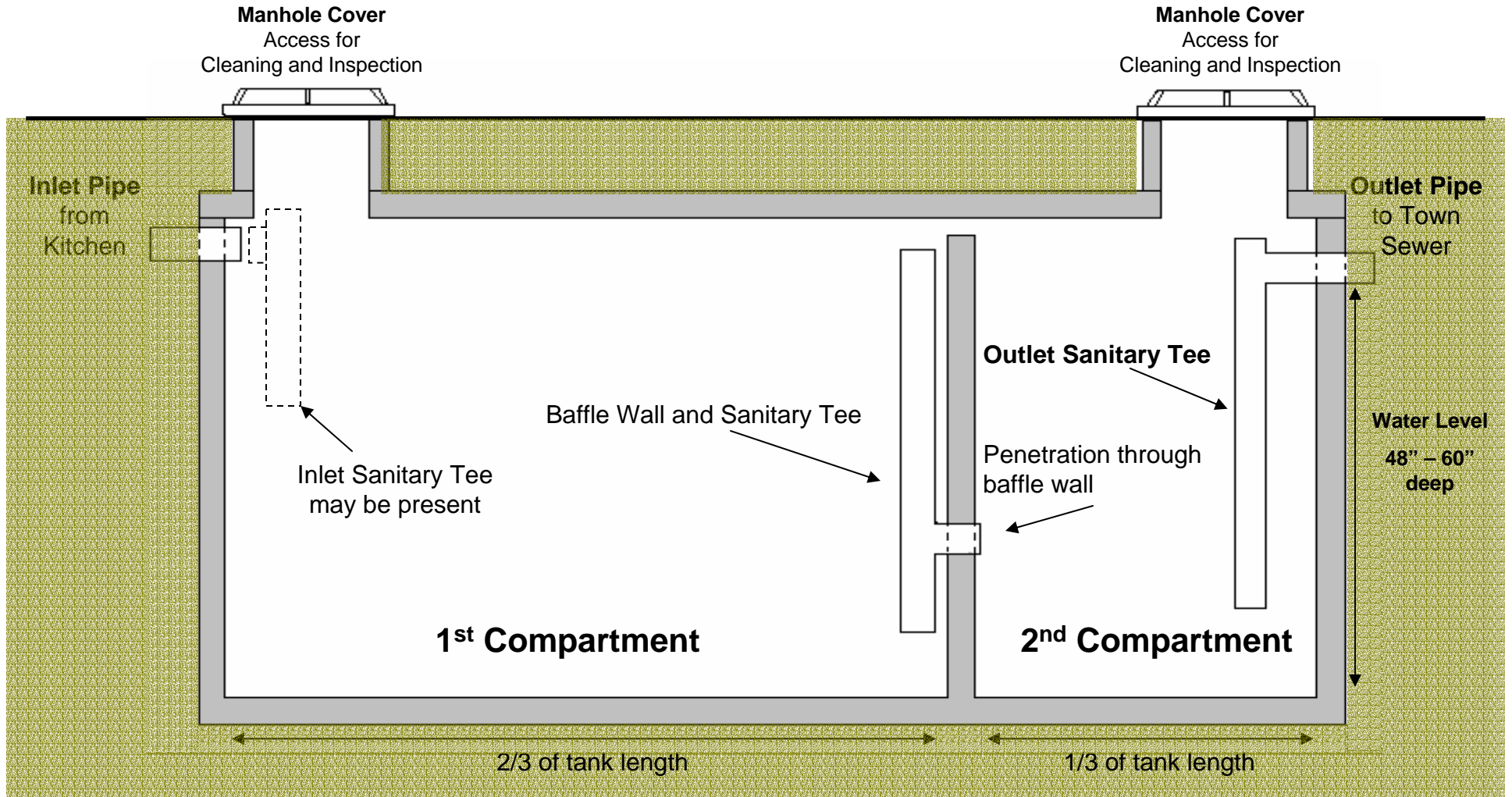
Typical Vacuum Tanker Truck



Typical Grease Trap Locations



Typical Grease Trap/Interceptor Design



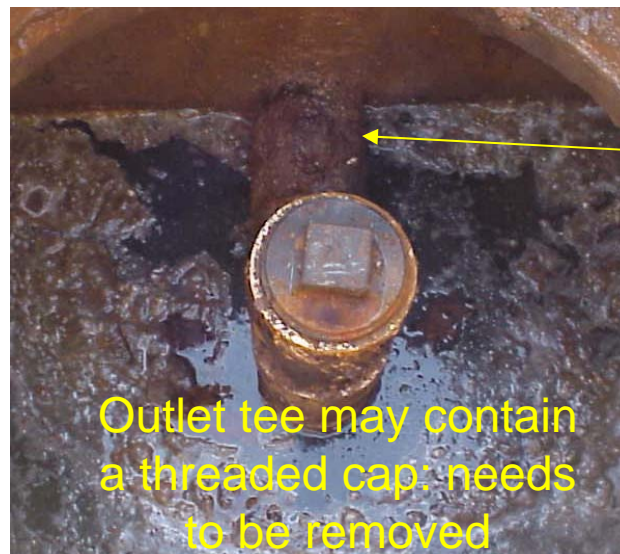
Outlet Sanitary Tee (PVC)



4" outlet sanitary tee



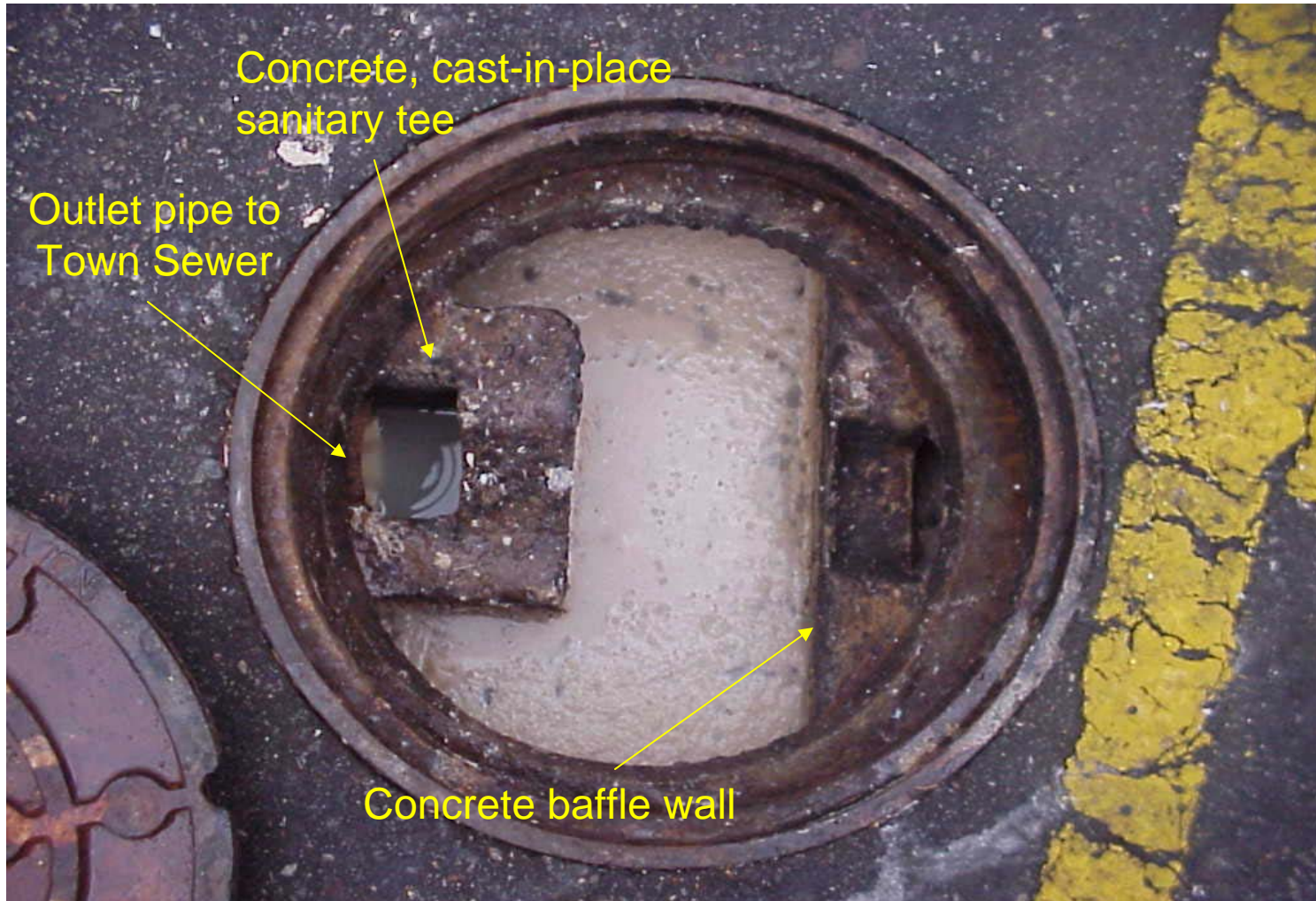
Grease Accumulation



Outlet tee may contain a threaded cap: needs to be removed

Outlet pipe to Town Sewer

Outlet Sanitary Tee (Concrete)



Grease Trap Before & After Cleaning

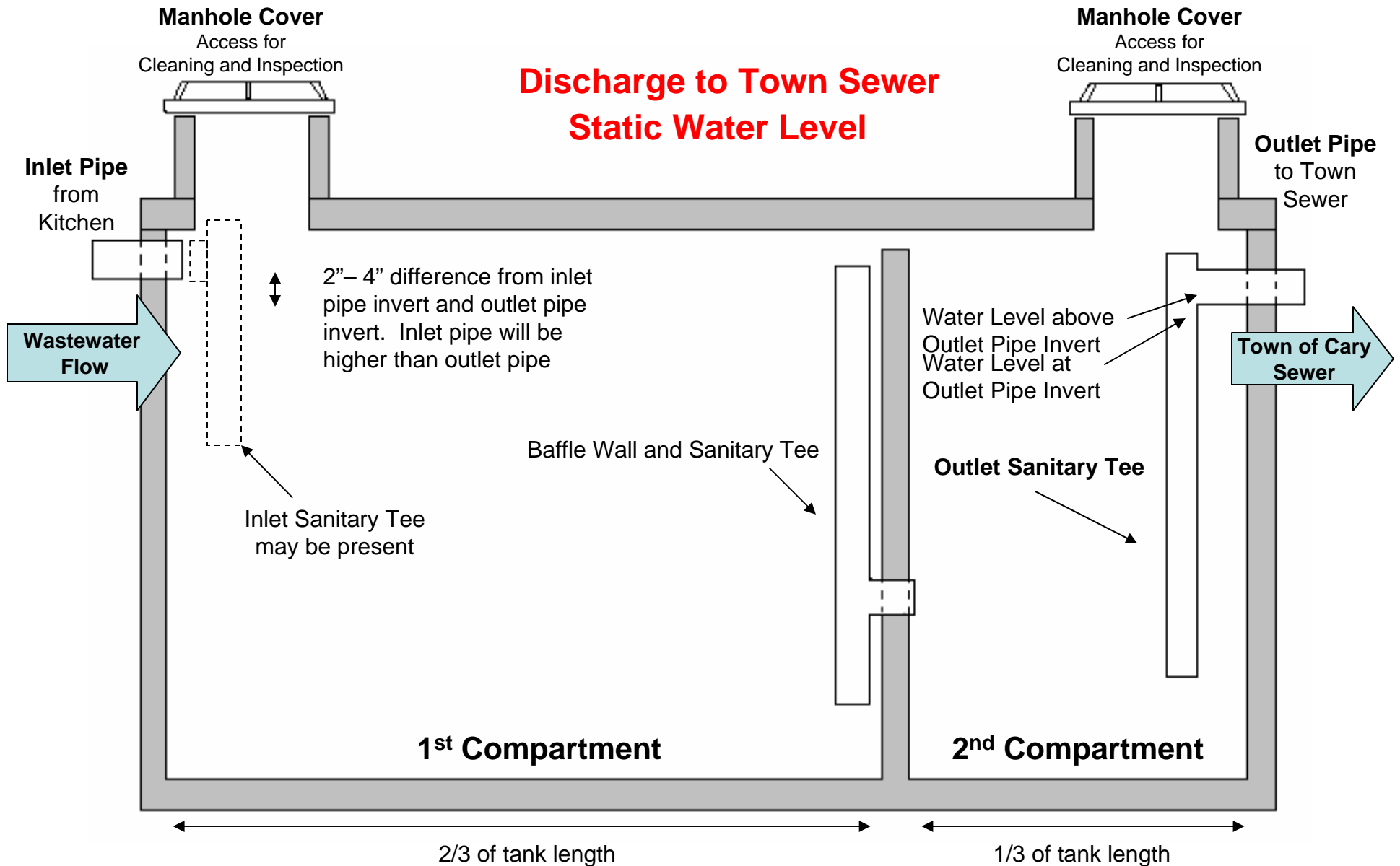
BEFORE



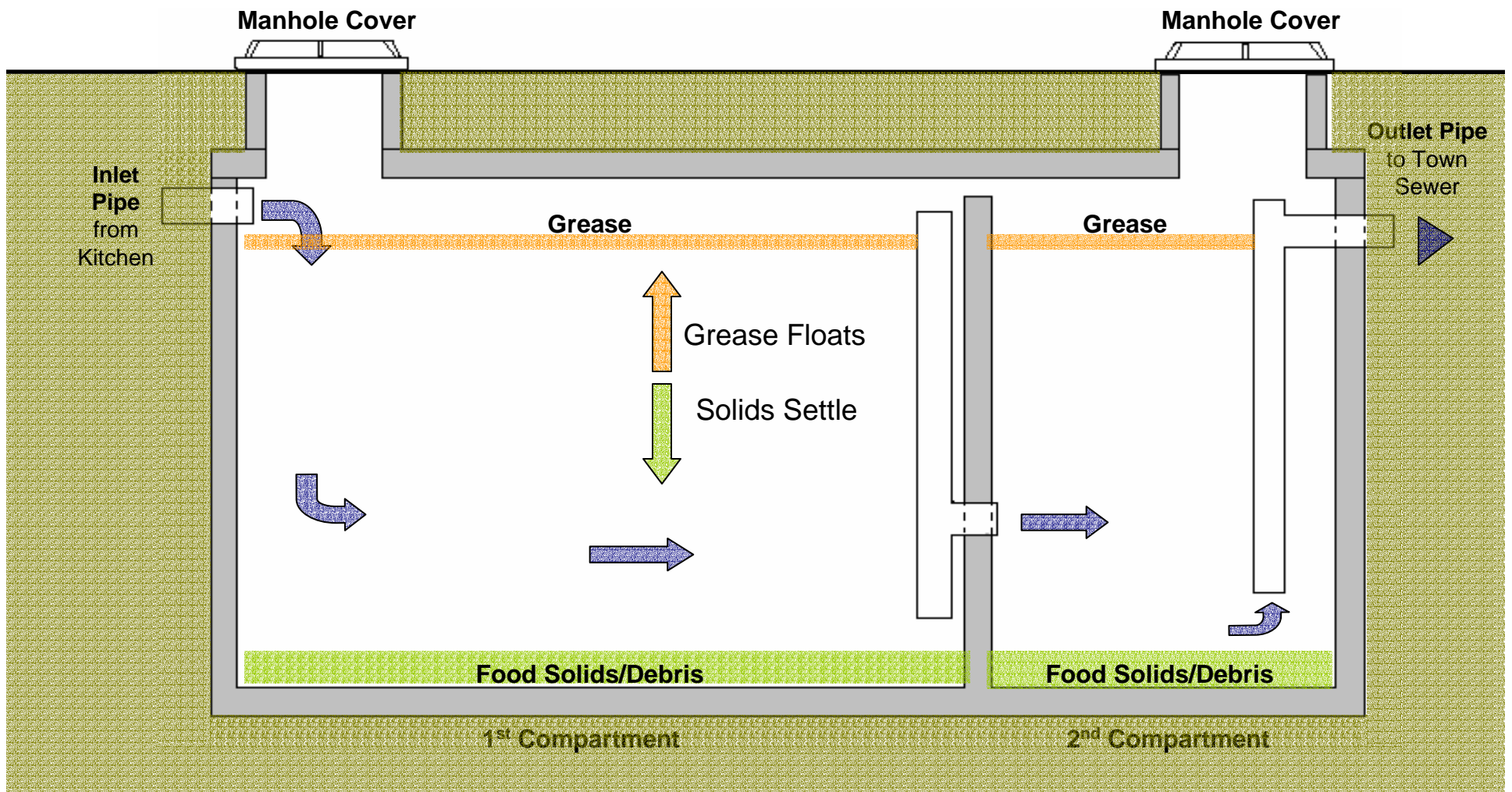
AFTER



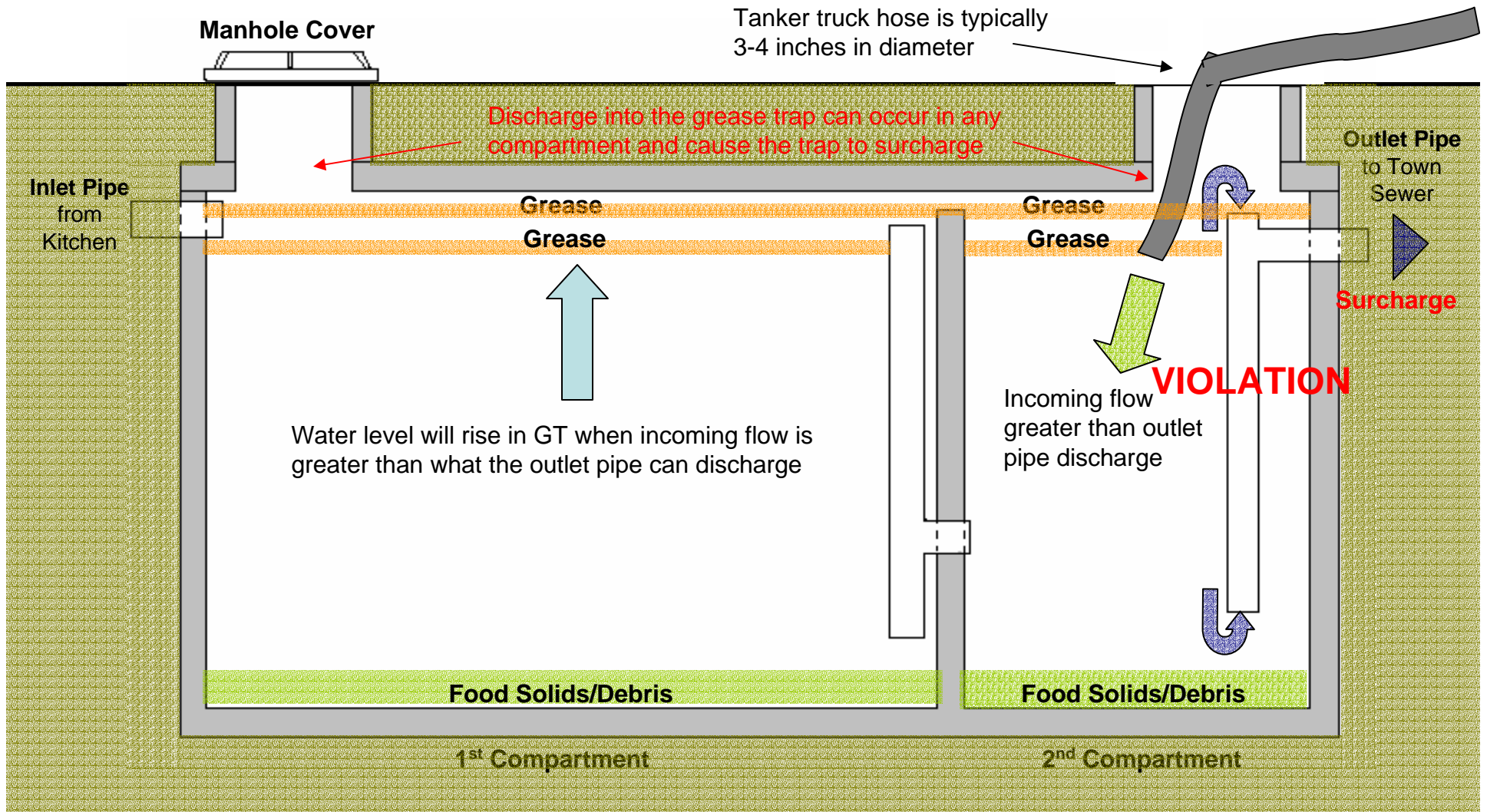
Grease Trap Fluid Levels



How a Grease Trap Works



Discharge into Grease Trap



Signs of Illegal Discharge

IMPORTANT

A visual inspection of the outlet sanitary tee should be made as soon as an Officer arrives on scene

If a discharge is noted a violation is occurring

Reasonable Suspicion to Investigate Illegal Discharges

- Company name, telephone #, or permit # not displayed on vacuum tanker truck
- License tag is covered by piping, heavy accumulations of grease, or is placed where it cannot be seen (illegible or covered)
- Truck operator inserts hose, opens valves and does not attend the hose

Reasonable Suspicion to Investigate

Truck Operator:

- Does not open or insert hose in all compartments of the grease trap
- Returns to truck or operates valves when officer arrives on scene
- Parks truck to obstruct visibility of the grease trap
- Parks, operates in a suspicious, non-conforming area

Signs of Illegal Discharge

- Discharge into any storm water or sanitary sewer conveyance (manhole, storm drain)
- Visual observation of discharge of waste in the outlet sanitary tee; tees submerged
- Liquid level in grease trap is rising above static water level rather than lowering
- Turbulent conditions in the grease trap above the static water level

Inconspicuous Disposal of Grease Trap Wastes

Illegal Disposal Scenario #1

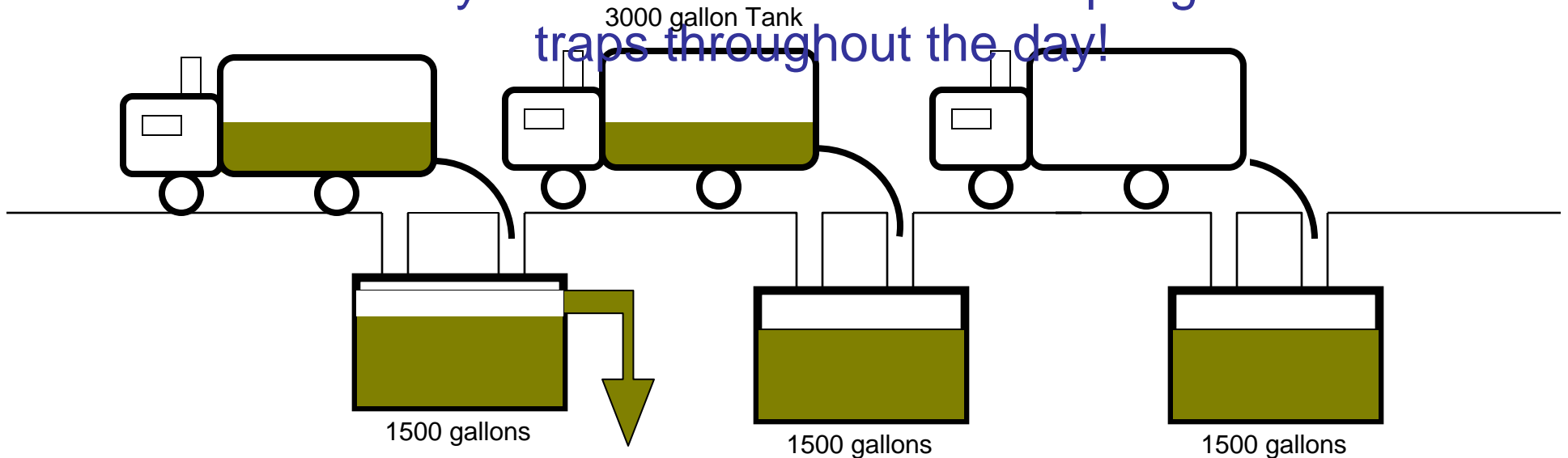
Multiple Grease Trap Pump and Dump

Grease Trap #3

Grease Trap #2

Grease Trap #1

This cycle can continue with multiple grease traps throughout the day!



DISCHARGE TO MUNICIPALITY

VIOLATION

Illegal Disposal Scenario #2

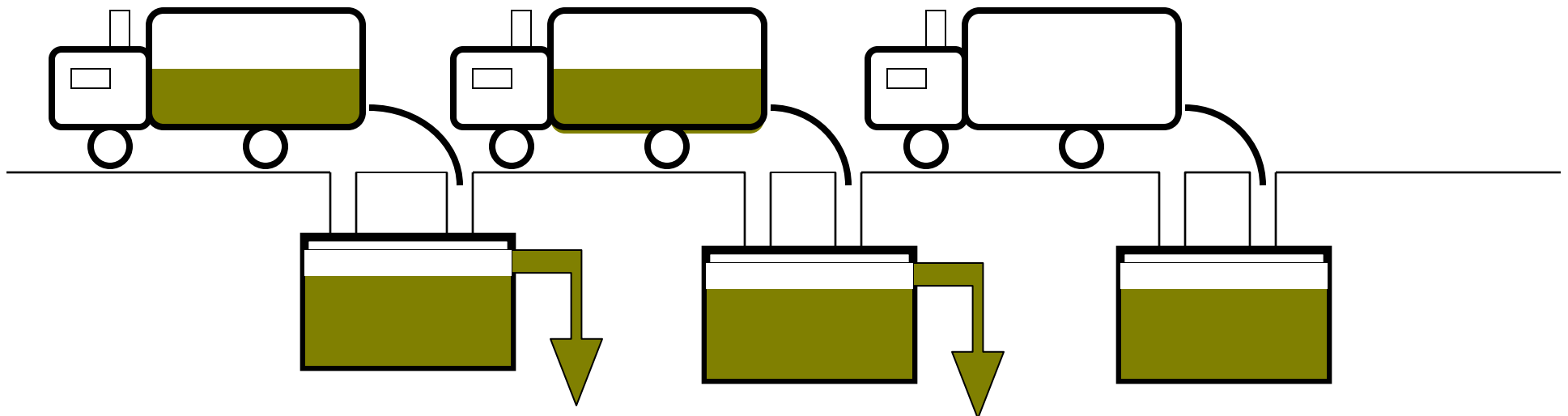
Leap Frog Pump and Dump

Grease Trap #3

Grease Trap #2

Grease Trap #1

This cycle can continue with multiple grease traps throughout the day!



DISCHARGE TO MUNICIPAL SEWER DISCHARGE TO MUNICIPALITY SEWER

VIOLATION

VIOLATION

Illegal Disposal Training Video



In the event of an illegal discharge

The following Town of Cary Public Works and Utilities Department personnel should be notified as soon as possible, in order to inspect the sewer system for potential blockages:

8:00 AM – 5:00 PM

Public Works and Utilities Customer Service

Ph: 469-4090

Radio Channel: 1A

5:00 PM – 8:00 AM

Town of Cary Police Communications

Communications has access to the contact list for the Repair Team, Night/Weekend, and On-call Personnel

In the event of a known illegal discharge

The following Town of Cary Public Works and Utilities Department personnel should be contacted to follow up after an illegal discharge:

Utilities Director
Ph: XXX-XXXX
Pgr: XXX-XXXX
E-Mail: xxxx@xxxx

Mr. Leon Holt
Utility Pretreatment Manager
Ph: 462-3871
Pgr: XXX-XXXX
E-Mail: leon.holt@townofcary.org

Donald Smith
Utility Pretreatment Tech II
Ph: 319-4564
Pgr: XXX-XXXX
Cell: 621-7986
E-Mail: donald.smith@townofcary.org

