

Town of Cary

Grease Interceptor Determination and Requirements Conditional Use

The Town of Cary adopted on December 10, 1998 an ordinance to aid in the prevention of sanitary sewer blockages and obstructions from the contribution and accumulation of fats, oils, and greases into such sewer system from industrial or commercial establishments, particularly food preparation and serving facilities (Sec. 36-183.).

Businesses participating in the preparation and serving of food or having the potential of producing fats, oils, and greases shall be required to have and maintain a grease interceptor.

Grease interceptors will be required at new construction, existing facilities, if existing interceptor(s) is inadequate, or if a grease interceptor is not present where required.

NEW CONSTRUCTION

Said businesses that are constructing a new food service facility will be required to contact the Town of Cary Public Works and Utilities Department Pretreatment Division or obtain information from the Town's website in order to obtain grease interceptor sizing requirements. A Town of Cary Permit Application must be acquired for grease interceptor and plumbing plan review. A Town of Cary grease interceptor sizing spreadsheet will be required for determining the size of said interceptor.

New construction generally requires the installation of an exterior in-ground grease interceptor sized to meet a minimum of 24 minutes retention time during peak hydraulic load. Town of Cary inlet and outlet sanitary tee configurations and a sampling vault will be required for all new grease interceptor installations.

If a grease interceptor is proposed to be installed during the utilities construction phase of a site development, the following applies:

Include location of exterior in-ground grease interceptor(s) on utility site plans. If grease interceptor(s) is proposed to be installed during site plan construction phase, Town of Cary grease interceptor sizing and details, located at www.townofcary.org/grease, must be included with site plans; otherwise, include note that "grease interceptor details are to be included with building construction plans". Note: A plumbing permit will be required for installation of the grease interceptor and any associated plumbing sewer lateral if installed during the site development phase of construction. If the grease interceptor(s) is to be considered as a "community interceptor, i.e., one device serving multiple tenants, the owner of the property will be considered as the responsible party with which the Town of Cary interacts.

EXISTING BUILDING

Said businesses that are locating to an existing building, remodeling, or who have an inadequate interceptor and are required to have and maintain a grease interceptor can determine what grease interceptor device will be required.

Follow the Existing Building Grease Interceptor Flow Chart and answer the questions in order to determine grease interceptor requirements.

IN-GROUND EXTERIOR GREASE INTERCEPTOR

In-ground exterior grease interceptor sized to meet a minimum of 24 minutes retention time will be required if all criteria are adequate.

1. If there is adequate space.
 - Adequate room for installation?
 - Will property lines be an issue?
 - Will proposed interceptor be too close to building foundation/footing?
2. Sewer main accessible.
 - Sewer main located within a workable distance?
 - Depth of sewer main acceptable for proper installation and pipe slope?
3. Site sewer service acceptable.
 - Building sewer lateral accessible?
 - Will current plumbing layout without major re-plumbing support exterior grease interceptor?
 - Tank location accessible for unhindered maintenance?

Information such as existing plumbing plans, utility locates, and/or property site plans supporting the hardship in the installation of an exterior in ground grease interceptor will be required in order to obtain approval of alternative grease interception.

Call the Town of Cary Public Works and Utilities Department Pretreatment Division for sizing requirements at 319-4564 or 469-3871.

EXISTING GREASE INTERCEPTOR

Existing grease interceptor(s) located within an existing building are adequate if they meet the criteria below.

1. Facilities that meet the Town of Cary 24 minute hydraulic residence time and include Town of Cary design inlet and outlet sanitary tees.
2. Facilities that have been approved by the Pretreatment Division for alternative grease interception and are installed with appropriate construction permits.

Existing grease interceptor(s) located within an existing building are not adequate if they do not meet the above criteria. Existing grease interceptor(s) that are not adequate shall be required to install a properly sized exterior grease interceptor. If the installation of an exterior grease interceptor is not feasible then an adequately sized interior grease interceptor is required.

ALTERNATIVE GREASE INTERCEPTORS

The Pretreatment Division will review any site specific information for the installation of alternative interior or exterior grease interceptor. Contact the Pretreatment Division after the flow chart has been followed and you have determined what type of grease interceptor will be required. The Town of Cary will confirm the grease interceptor size and adequacy for your facility.

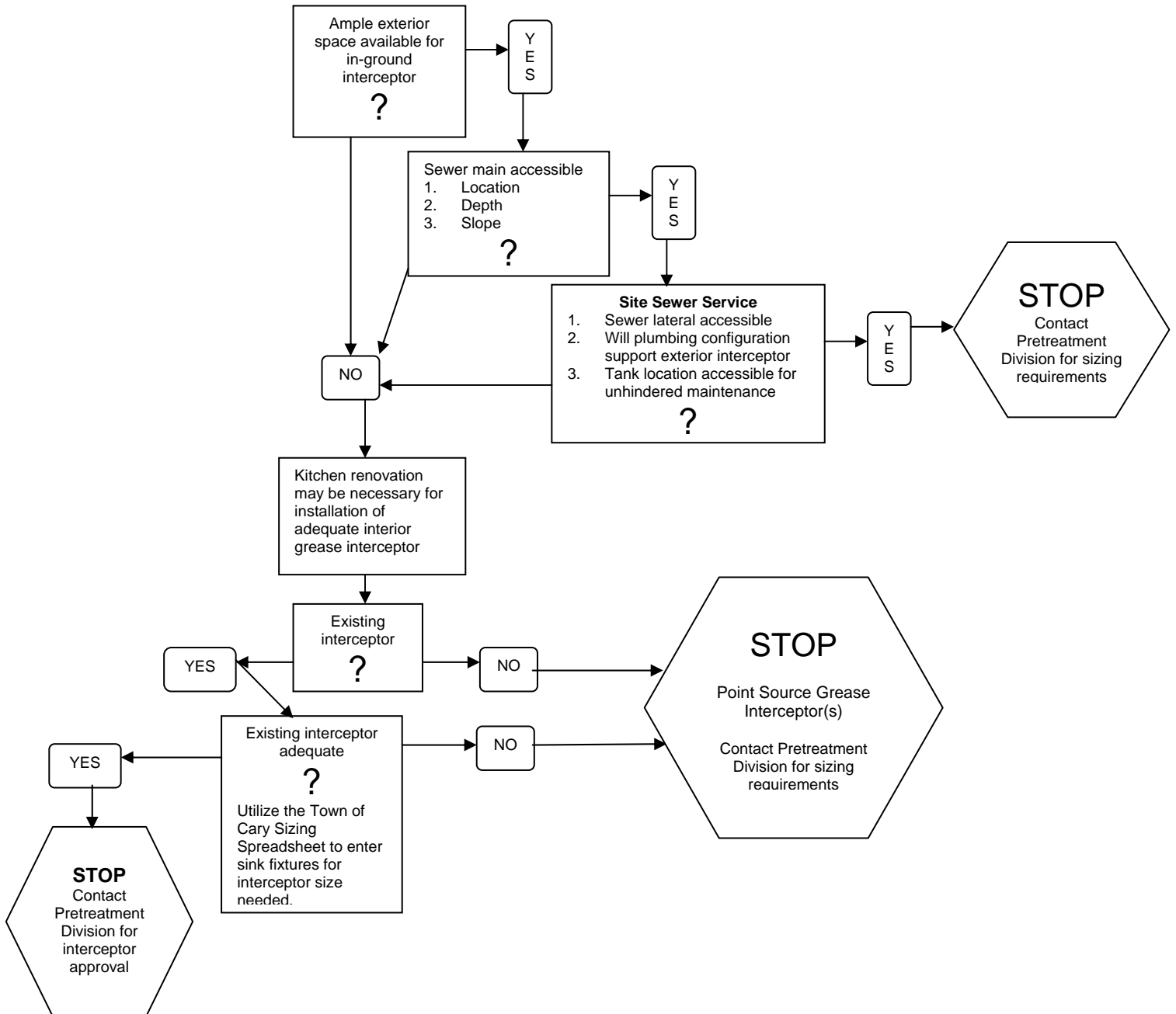
If there are any questions regarding this issue please feel free to contact the Town of Cary Public Works and Utilities Department Pretreatment Division at 319-4564 or 469-3871 For information on the Town of Cary Fats, Oils, and Grease Control Ordinance, please visit our web site at www.townofcary.org/grease

Existing Facilities

Common Sewer

Grease interceptor requirement flow chart

Town of Cary Public Works and Utilities Department
 Pretreatment Division
 (919) 462-3871 or (919) 319-4564



Grease interceptor sizes for exterior in-ground devices are typically identified by wetted volume (example: 300 gallons, 500 gallons, 1000 gallons, 2000 gallons, etc.)

Grease interceptor sizes for interior in-floor or on-floor devices are typically identified by their approved flow rate in gallons per minute (example: 25 gpm, 35 gpm, 100 gpm, etc.). Please note that the flow rate and pounds of grease retention for a device are not interchangeable. A flow rates generally do not equate to a specific wetted volume within the interceptor.