

PLANT LIST

KEY	QTY	PLANT NAME	SIZE	REMARKS
TR	38	PINUS TAEDA	2-4 1/2' HT.	LOBSTER STAKED
MM	50	MAX WRIGHT MYRTLE CERBEREA	24\"/>	

LANDSCAPE NOTES:

1. ALL PLANTING SHALL BE DONE PRIOR TO INSTALLATION OF PLANT MATERIAL. NOTIFY OWNER OF ANY DISCREPANCIES BETWEEN FIELD CONDITIONS AND THOSE SHOWN ON THE PLAN.
2. VARIATION OF TOTAL QUANTITIES AS SHOWN ON THE PLAN AND THE TOTAL QUANTITIES SHALL BE AS SHOWN ON THE PLAN.
3. ALL PLANT MATERIAL SHALL CONFORM WITH THE STANDARDS THE WRITTEN SPECIFICATIONS.
4. PLANTS SHALL BE MULCHED WITH A MINIMUM OF 3\"/>

LANDSCAPE MAINTENANCE PLAN

- a. All above ground utility equipment and facilities associated with on-site electric, cable, telephone, gas or other utility shall be responsible for the installation, preservation, and maintenance of all plantings and physical features shown on the maintenance plan to include but not limited to:
 - i. Fertilization: Fertilize lawn twice per year (Feb. 15-15-15).
 - ii. Irrigation: Maintain irrigation system and water pressure.
 - iii. Mowing: Mow lawn weekly during growing season per manufacturer's instructions.
 - iv. Pruning: Prune trees and shrubs as needed to maintain proper form and health.
 - v. Pest/Disease: Inspect plants for pests and diseases and apply appropriate treatments.

GENERAL NOTES

- a. All above ground utility equipment and facilities associated with on-site electric, cable, telephone, gas or other utility shall be responsible for the installation, preservation, and maintenance of all plantings and physical features shown on the maintenance plan to include but not limited to:
 - i. Fertilization: Fertilize lawn twice per year (Feb. 15-15-15).
 - ii. Irrigation: Maintain irrigation system and water pressure.
 - iii. Mowing: Mow lawn weekly during growing season per manufacturer's instructions.
 - iv. Pruning: Prune trees and shrubs as needed to maintain proper form and health.
 - v. Pest/Disease: Inspect plants for pests and diseases and apply appropriate treatments.

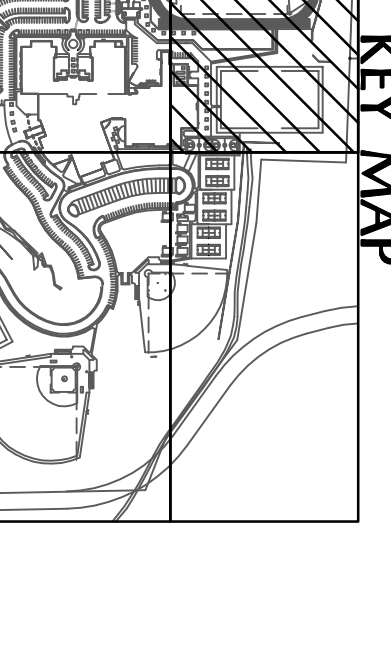
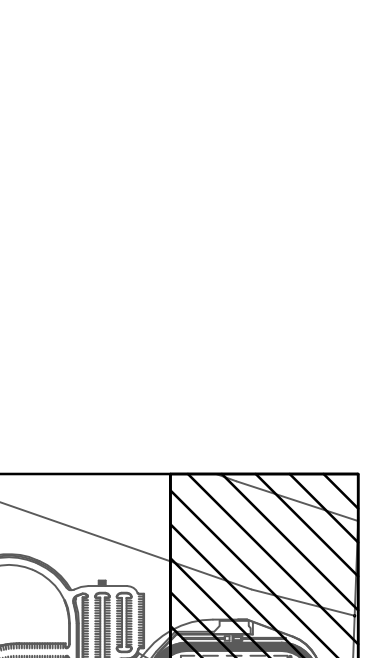
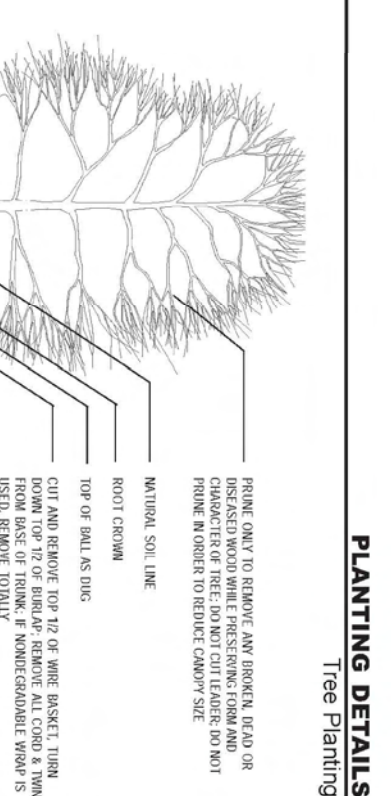
SOIL TEST RESULTS

SOIL CLASS: MM
 AC: 1.2
 P-H: 5
 W/V: 1.31
 CEC: 11.3
 SR: 89.0
 PH: 6.2

AC: 1.2
 ZH-A: 36
 ZH-H: 36
 C-H: 48
 S-H: 9
 Mg: 33.0
 Mn: 0.6

RECOMMENDATIONS

LIME: NONE REQUIRED PH 6.2
 FERTILIZER: 1 LB 5-10-10 PER TREE SPREAD EVENLY STARTING 12\"/>



LANDSCAPE NOTES:

1. ALL PLANTING SHALL BE DONE PRIOR TO INSTALLATION OF PLANT MATERIAL. NOTIFY OWNER OF ANY DISCREPANCIES BETWEEN FIELD CONDITIONS AND THOSE SHOWN ON THE PLAN.
2. VARIATION OF TOTAL QUANTITIES AS SHOWN ON THE PLAN AND THE TOTAL QUANTITIES SHALL BE AS SHOWN ON THE PLAN.
3. ALL PLANT MATERIAL SHALL CONFORM WITH THE STANDARDS THE WRITTEN SPECIFICATIONS.
4. PLANTS SHALL BE MULCHED WITH A MINIMUM OF 3\"/>

LANDSCAPE MAINTENANCE PLAN

- a. All above ground utility equipment and facilities associated with on-site electric, cable, telephone, gas or other utility shall be responsible for the installation, preservation, and maintenance of all plantings and physical features shown on the maintenance plan to include but not limited to:
 - i. Fertilization: Fertilize lawn twice per year (Feb. 15-15-15).
 - ii. Irrigation: Maintain irrigation system and water pressure.
 - iii. Mowing: Mow lawn weekly during growing season per manufacturer's instructions.
 - iv. Pruning: Prune trees and shrubs as needed to maintain proper form and health.
 - v. Pest/Disease: Inspect plants for pests and diseases and apply appropriate treatments.

GENERAL NOTES

- a. All above ground utility equipment and facilities associated with on-site electric, cable, telephone, gas or other utility shall be responsible for the installation, preservation, and maintenance of all plantings and physical features shown on the maintenance plan to include but not limited to:
 - i. Fertilization: Fertilize lawn twice per year (Feb. 15-15-15).
 - ii. Irrigation: Maintain irrigation system and water pressure.
 - iii. Mowing: Mow lawn weekly during growing season per manufacturer's instructions.
 - iv. Pruning: Prune trees and shrubs as needed to maintain proper form and health.
 - v. Pest/Disease: Inspect plants for pests and diseases and apply appropriate treatments.

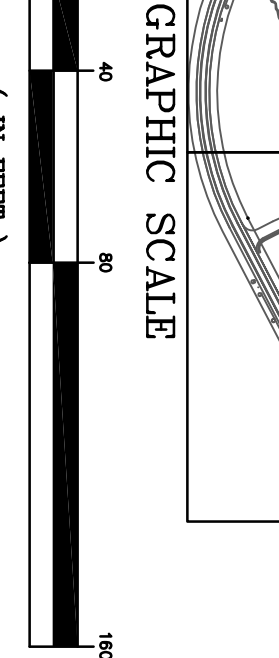
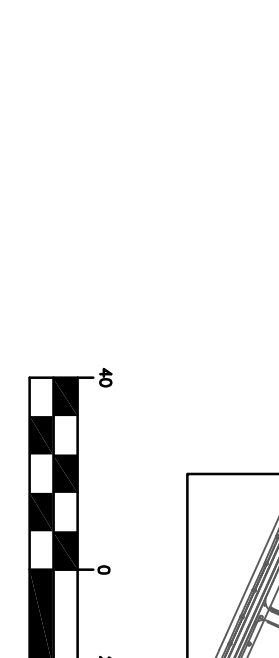
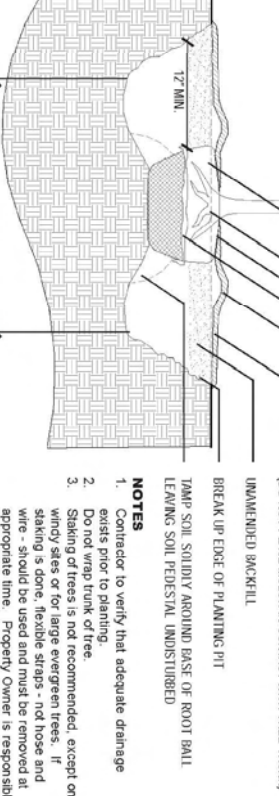
SOIL TEST RESULTS

SOIL CLASS: MM
 AC: 1.2
 P-H: 5
 W/V: 1.31
 CEC: 11.3
 SR: 89.0
 PH: 6.2

AC: 1.2
 ZH-A: 36
 ZH-H: 36
 C-H: 48
 S-H: 9
 Mg: 33.0
 Mn: 0.6

RECOMMENDATIONS

LIME: NONE REQUIRED PH 6.2
 FERTILIZER: 1 LB 5-10-10 PER TREE SPREAD EVENLY STARTING 12\"/>



LANDSCAPE NOTES:

1. ALL PLANTING SHALL BE DONE PRIOR TO INSTALLATION OF PLANT MATERIAL. NOTIFY OWNER OF ANY DISCREPANCIES BETWEEN FIELD CONDITIONS AND THOSE SHOWN ON THE PLAN.
2. VARIATION OF TOTAL QUANTITIES AS SHOWN ON THE PLAN AND THE TOTAL QUANTITIES SHALL BE AS SHOWN ON THE PLAN.
3. ALL PLANT MATERIAL SHALL CONFORM WITH THE STANDARDS THE WRITTEN SPECIFICATIONS.
4. PLANTS SHALL BE MULCHED WITH A MINIMUM OF 3\"/>

LANDSCAPE MAINTENANCE PLAN

- a. All above ground utility equipment and facilities associated with on-site electric, cable, telephone, gas or other utility shall be responsible for the installation, preservation, and maintenance of all plantings and physical features shown on the maintenance plan to include but not limited to:
 - i. Fertilization: Fertilize lawn twice per year (Feb. 15-15-15).
 - ii. Irrigation: Maintain irrigation system and water pressure.
 - iii. Mowing: Mow lawn weekly during growing season per manufacturer's instructions.
 - iv. Pruning: Prune trees and shrubs as needed to maintain proper form and health.
 - v. Pest/Disease: Inspect plants for pests and diseases and apply appropriate treatments.

GENERAL NOTES

- a. All above ground utility equipment and facilities associated with on-site electric, cable, telephone, gas or other utility shall be responsible for the installation, preservation, and maintenance of all plantings and physical features shown on the maintenance plan to include but not limited to:
 - i. Fertilization: Fertilize lawn twice per year (Feb. 15-15-15).
 - ii. Irrigation: Maintain irrigation system and water pressure.
 - iii. Mowing: Mow lawn weekly during growing season per manufacturer's instructions.
 - iv. Pruning: Prune trees and shrubs as needed to maintain proper form and health.
 - v. Pest/Disease: Inspect plants for pests and diseases and apply appropriate treatments.

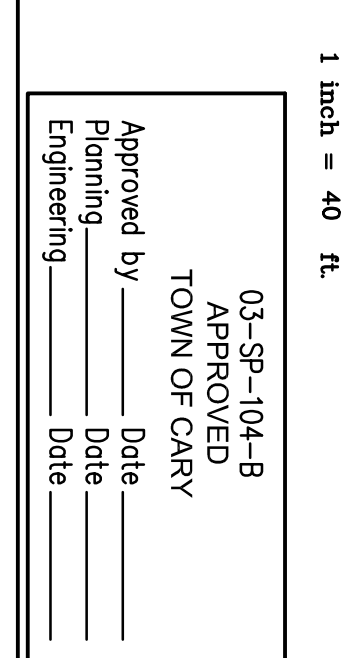
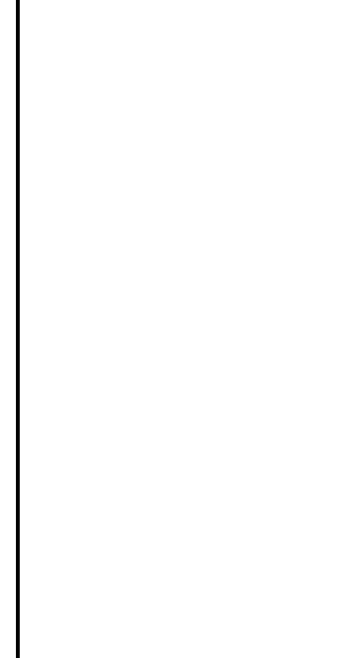
SOIL TEST RESULTS

SOIL CLASS: MM
 AC: 1.2
 P-H: 5
 W/V: 1.31
 CEC: 11.3
 SR: 89.0
 PH: 6.2

AC: 1.2
 ZH-A: 36
 ZH-H: 36
 C-H: 48
 S-H: 9
 Mg: 33.0
 Mn: 0.6

RECOMMENDATIONS

LIME: NONE REQUIRED PH 6.2
 FERTILIZER: 1 LB 5-10-10 PER TREE SPREAD EVENLY STARTING 12\"/>



<p>REVISIONS</p> <table border="1"> <thead> <tr> <th>NO.</th> <th>DATE</th> <th>DESCRIPTION</th> </tr> </thead> <tbody> <tr> <td>1</td> <td>4-29-2010</td> <td>FIRST REVIEW COMMENTS</td> </tr> <tr> <td>2</td> <td>6-10-2010</td> <td>SECOND REVIEW COMMENTS</td> </tr> <tr> <td>3</td> <td>10-20-2010</td> <td>BUFFER REVISION</td> </tr> <tr> <td>4</td> <td>11-23-2010</td> <td>THIRD REVIEW COMMENTS</td> </tr> </tbody> </table>	NO.	DATE	DESCRIPTION	1	4-29-2010	FIRST REVIEW COMMENTS	2	6-10-2010	SECOND REVIEW COMMENTS	3	10-20-2010	BUFFER REVISION	4	11-23-2010	THIRD REVIEW COMMENTS	<p>DESIGNED BY: GSH DRAWN BY: GSH DATE: 11-MAR-10 PROJECT NO.: 10-101</p>	<p>PANTHER CREEK HIGH SCHOOL BUFFER AMENDMENT 6770 McCRIMMON PARKWAY CARY, NC 27519</p> <p>WAKE COUNTY PUBLIC SCHOOL SYSTEM 10-101</p>	<p>PRELIMINARY PLANS FOR REVIEW ONLY DO NOT USE FOR CONSTRUCTION</p>	<p>CLH DESIGN</p> <p>410 R. Siler Rd. Suite 120 Cary, NC 27518 Phone: 919.319.6716 Fax: 919.319.7516</p>
	NO.	DATE	DESCRIPTION																
1	4-29-2010	FIRST REVIEW COMMENTS																	
2	6-10-2010	SECOND REVIEW COMMENTS																	
3	10-20-2010	BUFFER REVISION																	
4	11-23-2010	THIRD REVIEW COMMENTS																	
<p>AREA 1 SITE PLANTING AMENDED BUFFER PLAN</p> <p>Approved by: _____ Date: _____ Planning: _____ Date: _____ Engineering: _____ Date: _____</p> <p>03-SP-104-B APPROVED TOWN OF CARY</p> <p>C6.1</p>																			